



# Gehmann

shooting  
ahead -

# index

## SIGHTING EQUIPMENT

rearsight irises	5 - 11
rearsights	12 & 13
special rearsight fittings	14
anti-glare tubes	15
spirit levels	16
foresight irises	17 - 19
foresights & inserts	20 & 21

## SHOOTING FRAMES

headbands & clip-on iris	22
	23

## CLOTHING

jackets & trousers	24 - 33
belt & braces, kneeling rolls	34
underwear, carrybag	35
gloves	36 & 37
slings	38
boots	39
caps & headbands with shield	40

## GEHMANN TEAMWEAR

41

## MORINI

pistols & accessories	42 - 45
grips & recharging equipment	46

## GEHMANN 609 & COMPRESSOR

47

## RIFLES & PISTOLS

match air pistols	48
small-bore pistols	49
match air rifles	50
small-bore rifles	51

## RIFLE FITTINGS

52 & 53

## CARRY CASES & GUNSLIPS

54 & 55

## SPECIAL EQUIPMENT

spotting 'scopes & stands	56 & 57
scoring & ballistic test equipment	58 - 61
special products	62 - 64
target changing equipment	65 - 67





**1953**

... this was the iris that started it all - the forerunner of all the iris and filter sets that were to develop from it!

**1956**

... the first foresight iris to be seen in the modern target shooting world.



## Gehmann's background - a potted history

Back in the 1930s a young man named Walter Gehmann was soon noticed on the range. He was becoming a pain to his fellow competitors in small-bore and full-bore rifle, winning competitions all the way to national level. Seeking yet further improvements in his scores he explored the possibility of developing some of the shooting equipment of the day. As early as 1936 he designed his first precision rearsight assembly. The following year he developed the first specialised shooting glasses with a swivelling lens holder. In 1939, while minds were elsewhere he came up with Germany's first target-shooting jacket, shooting sling, boots and specialised glove.

1949 saw the birth of a company still bearing Gehmann's name. Although the first 40 years were steered by founder Walter it recently saw son Markus assist father for 10 years - then finally take over of the reins....

Back to the story of Walter Gehmann's career: it went on to see him achieve a world championship, followed by the arrival of his first precision rearsight iris in 1953 - with which he won no less than seven German championships. Arguably the type of work we all wish we could do! In 1956 along came his first foresight iris and two years later his first colour filter unit for a rearsight. A little known fact about its founder is his talent for assisting the design and development of other well known manufacturers in their early days. He patented the Mauser 66 action, designed the Anschütz Match 54 action and assisted design and production of the Feinwerkbau 65, 150, 300 and small-bore rifle. He was also involved in development work for Walther. Interestingly the company itself has never produced its own rifle or pistol - something wise men close to our present manufacturers may say was due to a shrewd business nose! This road of new ideas, designs leading to successful products, engineering with quality, excellent tools and equipment - just went on.

Herr Gehmann snr. now has 100+ patents to his credit and still exercises his grey matter at the desk. Some of his best ideas never made it to us - unfortunately. Two examples being an electronically controlled iris that automatically adjusts to ambient light and a twin eyesight combined prism enabling the rifle shooter to use both eyes for sighting - one assumes an inquiring mind will forever explore avenues of possibility though not all will achieve maturity.

More recently Gehmann witnessed the introduction of what is now the world's leading pre-charged match air weapons - ending up appointed as Morini's major distributor. The 162.E pistol, a revolution in its day sent rivals scampering for similar ideas - although - to be fair, no-one has yet manufactured anything equaling the quality of Morini's electronic trigger and dry-fire mechanism....

So in conclusion - today Gehmann is a world recognised target shooting equipment manufacturer - supplying products designed to give us our best shot - at prices we can afford - and with a service life second to none.....

**GRAHAM MANLEY**

**1937**

...at the time of its design the shooter had nothing else like it - when you are behind the sight during shooting the head is never in the same position as it is when we see normally - so make a lens holder that is correctly angled.



**the 40's**

Walter Gehmann was the first German to design a dedicated target rifle shooters jacket

# World's top shooters who use Gehmann products...



**Rajmond Debevec**  
Slovenia  
Olympic champion  
World champion (multiple)  
European champion (multiple)  
World Cup champion (multiple)



**Petra Horneber**  
Germany  
World champion (multiple)  
German champion (multiple)  
World Cup champion (multiple)



**Jonas Edmann**  
Sweden  
Olympic champion  
World champion  
Swedish champion (multiple)



**Jean Pierre Amat**  
France  
Olympic champion  
World champion (multiple)  
European champion (multiple)  
World record holder



**Christian Klees**  
Germany  
Olympic champion  
German champion (multiple)  
European champion  
World Cup champion  
World record holder (multiple)



**Rebecca Frank**  
Germany  
World champion (multiple)  
European champion (multiple)  
German champion (multiple)



**Franck Badiou**  
France  
World champion (multiple)  
European champion (multiple)



**Hubert Bichler**  
Germany  
World champion  
European champion  
German champion (multiple)



**Petr Kurka**  
Czechia  
World champion (multiple)  
European champion (multiple)  
World Cup champion



**Frank Dobler**  
Germany  
World champion (multiple)  
European champion (multiple)  
German champion (multiple)  
World Cup champion



**Wolfgang Waibel jun.**  
Austria  
European champion  
World Cup champion  
World record holder



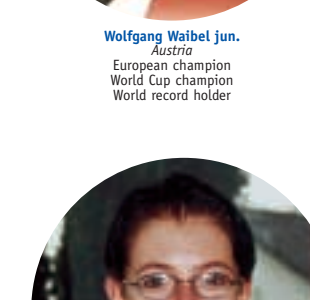
**Belarus Team**  
World champions (multiple)  
European champions (multiple)



**Thomas Farnik**  
Austria  
World champion (multiple)  
European champion (multiple)  
Winner World Cup Final  
World Cup champion (multiple)  
World shooter of the year



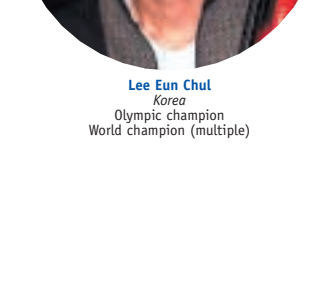
**Maik Eckhardt**  
Germany  
European champion (multiple)  
German champion (multiple)



**Angela Kugele**  
Germany  
European champion (multiple)  
German champion  
European record holder  
German record holder



**Claus Hildebrand**  
Germany  
European champion  
German champion (multiple)



**Lee Eun Chul**  
Korea  
Olympic champion  
World champion (multiple)



**Timo Mohaupt**  
Germany  
European champion (multiple)  
German champion  
World record holder  
German record holder



## 2001 news update

*After more than 20 years in use we realised the old iris was not all we had hoped for. Our aim to perfect the inner circle and provide as near as possible a geometric ring was achieved within the (then) bounds of existing engineering capabilities. Four years ago a decision was made to take this further - advances were made and subsequently patented.*

*Basically the old iris material was brass and free-floating within the adjustment wheel. It was found a difficulty existed when an iris was cleaned with high pressure air in that deformation of the leaves was possible. The new iris comprises individual pinlocated diamond-cut tempered spring steel leaves held within an outer metal ring, which in turn is locked to the iris body, for an absolute consistent point of aim. The adjustment of the new iris is made by continual, but varying pressure of a tube against the centre core of the iris. This ensures a perfect peephole diameter throughout the whole range of adjustment. Further all settings are marked with laser engraving whilst attachment to the rearsight is by conventional hex spanner.*

*No other rearsight iris system produced anywhere in the world has this superior patented design!*

**AS A RESULT OF THIS DEVELOPMENT GEHMANN NOW OFFER THEIR COMPLETE RANGE OF REARSIGHT IRIS COMBINATIONS -  
WITH A 30 YEAR GUARANTEE**

*We therefore want you to realise that although all irises may appear the same externally  
- only Gehmann irises have the latest patented technology incorporated within them.*

Olympic  
games  
Sydney 2000

gold

silver

bronze



# now so good - for free a 30 year guarantee...



## 510 rearsight iris

- \* of an even shorter overall length the new rearsight is adjustable over the wider range of 0.5 - 3.0 mm
- \* the fixed seat iris now comprises individually pin-located diamond-cut tempered spring steel leaves
- \* the aim point is precisely maintained throughout the increased range of adjustment by the introduction of a new system of aperture control which operates by varying pressure of a steel tube against the central aim point. This guarantees a perfect circle at any point within the scale
- \* light reflection is kept to a minimum by the use of the latest matt finishes internally and externally
- \* this system is unique to Gehmann and cannot be found in any other rearsight iris in current production anywhere in the world!



## 550 polarisation filter

- \* incorporates the patented 510 iris
- \* eliminates reflection by use of the matt materials described above
- \* 10 - 90 % polarised light absorption
- \* can be used as iris only if the polarisation filters are switched out or with just one or both polarisation filters - as required
- \* exceptionally easy to clean - instructions for this are enclosed with the sight

## knowledge & understanding

### polarisation filters

*Deviation of rays from the target bull or surrounding white, caused by high intensity light, can result in a poor or deteriorating sight picture and associated dropped shots.*

*Due to the nature of polarised filters and the fact that quartz grains lay on the filter in one direction it is possible with a single filter to absorb around 10 % of these high intensity reflected beams.*

*By introducing and overlaying a second filter at varying degrees to the first the incoming light intensity can be decreased to about 90 %. Thus by the use of one or both filters (or none at all) one piece of sighting equipment allows you control of nearly all your sighting problems!*



### 566 six colour filter

- \* incorporates the patented 510 iris
- \* filters are of the highest quality optical glass in colours: yellow, green, brown, light grey, dark grey and orange
- \* can be used as iris only if desired with the filters switched out
- \* easy to clean - instructions are included with the sight



567 - as 566 but with silver & blue finish

## knowledge & understanding

### colour filtration

*This is used for controlling meteorological conditions on the outdoor range such as haze, mist or poor light and indoors where target clarity suffers from poor lighting. The concept is that used in black and white photography many years ago. If clarity of the black bull is lost it can be sharpened by our colour filters. These optically flat glass colours allow the passage of specific wavelengths while restricting others - enhancing the black against the white in varying degrees - dependant on the colour filter selected.*

#### EFFECTS OF COLOURS ON YOUR SIGHT PICTURE

light grey:	absorbs 50% of normal light
dark grey:	absorbs 75% of normal light
brown:	turns artificial light with a light bluish tinge into what appears as natural daylight
light blue:	turns artificial light into natural light
dark blue:	as above - used for brighter artificial light
red:	enhances black and white contrast and reduces glare from the white surround
orange:	effect of clarity is as above however orange also reduces interfering ambient light
pale yellow:	effect is similar to that of orange but over a reduced wavelength (range of light)
lemon yellow:	affects slightly higher wavelengths
light green:	comfortable for the eye - effect as for orange
dark green:	as above however for more powerful light
lilac:	increases contrast in the red / green spectrum



### 565 iris combination filter

- \* incorporates the patented 510 iris
- \* six colour filters (as 566 above) and two polarisation filters combined with one unit
- \* can be used as iris only, iris with one colour filter, iris with one or both polarisation filters or iris with one colour filter plus one or both polarisation filters
- \* easy to clean & dismantle





## 500 snap-in iris & filter set

- \* a combination of the patented **510** iris and individual filters in yellow, green, brown, light and dark grey plus two polarisers
- \* enables use of iris only, iris with one or two colour filters, iris with one or both polarisers or iris with one colour and one polarisation filter
- \* filters are simply snapped into place
- \* when two filters are used together they ratchet against each other on machined grooves round their edge remaining correctly positioned within the spring retention clamp
- \* exceptionally easy to clean



## Parker-Hale threading

the list below illustrates which items in our range can be supplied with the special Parker-Hale thread

iris and/or filters:  
PH510, PH550, PH566, PH565

iris with magnifier and/or filters:  
PH530, PH551, PH570, PH575



## Sauer-Busk threading

the list below illustrates which items in our range can be supplied with the special Sauer-Busk thread

iris and/or filters:  
SB500, SB510, SB550, SB566, SB565



## knowledge & understanding

### alternative & specialised threading

*we also produce special threaded irises for unusual sight requirements, for example the Karabine 31 -*

*here we offer 511 iris and diopter, adjustable from 0.5 - 3.0 mm, or our 562 iris and six colour filter*

*if required we can manufacture any of our irises with your own thread - provided orders are for satisfactory quantities ordered at any one time*





## 530

- \* iris 510
- \* magnifying diopter adjustable from -4.5 to +4.5 diopter



## 530-7

- \* iris 510
- \* magnifying diopter adjustable from -3.5 to +3.5



## 551

- \* iris 510
- \* magnifying diopter adjustable from -4.5 to +4.5 diopter
- \* twin polarisation
- \* can be used with the polarisers switched out



## 551-7

- \* iris 510
- \* magnifying diopter adjustable from -3.5 to +3.5
- \* twin polarisation
- \* can be used with the polarisers switched out



## 570

- \* iris 510
- \* magnifying diopter adjustable from -4.5 to +4.5 diopter
- \* six colour filters
- \* can be used with the colour filters switched out



## 570-7

- \* iris 510
- \* magnifying diopter adjustable from -3.5 to +3.5
- \* with six colour filters
- \* can be used with the colour filters switched out



## 575

- \* iris 510
- \* magnifying diopter adjustable from -4.5 to +4.5 diopter
- \* six colour filters
- \* twin polarisation filters
- \* can be used with the colour or polarisation filters switched out



## 575-7

- \* iris 510
- \* magnifying diopter adjustable from -3.5 to +3.5
- \* six colour filters
- \* twin polarisation filters
- \* can be used with the colour or polarisation filters switched out



## knowledge & understanding

### magnifying diopters

*Our irises with integral magnifying diopters - with or without filters - are designed to assist shooters with reduced or failing eyesight to continue with their sport.*

*Our selection offers a choice of our magnified sights and/or filters in either the broader adjustment range of -4.5 to +4.5 diopter or the narrower adjustment range of -3.5 to +3.5 diopter*

## 577 thread connector

- \* enables all our diopter iris combinations to be used without the magnifying diopter
- \* the diopter is disconnected from the iris and/or filters and then 577 is inserted into the main body for installation in the rearsight



# looking a little brighter

*putting sparkle into your shooting*



## 501MC iris & external coloured rings

- \* iris 510
- \* each one engraved with its own serial number
- \* supplied with 5 matt coloured push-fit rings in red, blue, green, yellow and black that attach to the outer knurled ring nearest the eye to enhance and centrally focus the eye line and sight picture
- \* ensures head presentation to the rearsight is perfectly constant shot after shot
- \* an inexpensive accessory giving much benefit



## 512MC iris & 48 colour filter system

- \* iris 510
- \* 48 colours held within two independent rings of six colour filters
- \* may be used as one variable bank of six colours - yellow, green, orange, brown, light or dark grey - or - pale yellow, red, lilac, avocado green, light or dark blue
- \* can be mixed one colour from one ring with a second colour from the second ring to provide the remaining 36 colour options
- \* can be used as iris only with all filters switched out
- \* each one engraved with its own serial number
- \* has 5 external push-fit rubber rings for attachment to the iris



## 568MC iris combined 48 colour and polarisation filter set

- \* iris 510
- \* as 512MC above but incorporating twin polarisation filters
- \* can be used as an iris only
- \* each one engraved with its own serial number
- \* supplied with the 5 external push-fit coloured rings to assist eye position



## knowledge & understanding

### why we use filters

Light coming to the shooter's eye from the target bull is going every other which way. Controlling this to the point where the picture remains clear and sharp throughout the course of fire can be difficult and frustrating. This is why all possible help from optical filters is welcome. Using polarisation one can control the glare from the white target surround to enable the black edge of the bull to remain sharp and clear - this will often vary considerably during just one shoot. Having the ability to instantly change with the light is possible through polarisation and a choice of as many colour filters as you feel your pocket allows.

Make no mistake - whatever you do by way of filtration will give you an optical edge over using no filters at all. Remember, shooting is difficult enough as it is - losing the picture halfway through is just not necessary....



## knowledge & understanding

### iris filter combinations

*These are complicated products that embody complicated components - to understand this let us look at an example - say 546 MC...*

*It is constructed from over 77 parts and uses best quality aluminium (this makes an exceptionally light-weight unit but also machines well), the colour filters are optically flat glass carried within metal plates for maximum wear life, the iris is of spring steel with the patented centre pressure plate system giving a perfect sphere and the whole designed to be field strippable for cleaning.*

*The design is so good it carries our 30 year guarantee -free !*



#### 544MC as 501MC with 1.5x magnifier

- \* all descriptions as for 501MC but incorporating the 1.5x magnifying lens with the greater adjustment range of -4.5 to +4.5 diopter



#### 545MC as 512MC with 1.5x magnifier

- \* all descriptions as 512MC but incorporating the 1.5x magnifying lens with the greater adjustment range of -4.5 to +4.5 diopter



#### 546MC as 568MC with 1.5x magnifier

- \* all descriptions as for the 568MC but incorporating the 1.5x magnifying lens with the greater adjustment range of -4.5 to +4.5 diopter



#### 563 iris, 6 colour filter & single polariser in silver & black

- \* as item 565 but with only ONE polarisation filter
- \* extra short overall length
- \* finished in attractive silver & black



#### 564 iris, 12 colour filter and single polariser in silver & black

- \* iris 510
- \* 12 colour filters in two rings
- \* single polarisation filter
- \* finished in attractive silver and black



#### 507 6 coloured ring set

- \* will fit all standard 1" rearsight discs
- \* a set of matt coloured push-fit rings comprising: red, blue, green, yellow, black and light grey
- \* designed to provide an optical illusion that can be used to advantage by centralising the eye to the peephole when addressing the rearsight disc



#### 508 6 coloured ring & filter set

- \* 507 matt rings including six press-in optically flat 14mm glass filters in yellow, green, orange, brown, light and dark grey
- \* enables use of your favourite ring with any particular filter
- \* very easy to clean
- \* the coloured rings protect marking by spectacles

### 594 precision rearsight with see-through prism around the iris for sight of the wind flag

- \* designed for the 50m, 100m and 300m rifle shooter who wishes to read the wind
- \* vertical and horizontal adjustment gives bullet shift of just 1mm per click at 50 metres
- \* an iris is mounted front side of the rearsight and contained within two laminates of polarised glass that control the amount of incoming light through the wind flag viewer
- \* this polarisation is fully adjustable
- \* by addition of item **508**, external colour filtration can be added
- \* if required the see-through iris assembly can be unscrewed from the rearsight and the sight used with any standard iris or magnifier - a free adaptor for this is included with the sight



## knowledge & understanding

### special 594 rearsight

*Used to win the Olympics at Seoul and Atlanta it has also won gold medals for three position shooting at European championships. It is currently the only rearsight made by any of the world's leading manufacturers to enable viewing of the wind flags. This sight is extremely robust - for full-bore use as well as small-bore - and offers something unique to the seeker of perfection. In common with all items in the top shooter's locker this rearsight is a must. Whenever you shoot outdoors be certain to have this sight with you.*

### 587 Hammerli rearsight

- \* for Anschütz, Walther, Diana and Steyr
- \* **587R** for 300 m target rifles



### 587-13

- \* as above for Feinwerkbau



### 588 Elite model 98

- \* clamping specifically for the Mauser model 98 action
- \* this high precision assembly requires attachment prior to use



### 842 rearsight extension base mount

- \* an extension base mount for standard size receiver rails
- \* drops the mount line rearward to give height for a target sight to go on rifles where this is not normally possible
- \* has 11 cms of measured sight-mounting dovetail
- \* double rail clamps for security & alignment to your receiver
- \* in matt black alloy



### 590 Elite 301

- \* micro-precision adjustment giving 1 mm bullet shift at 50 metres



### 589 Elite 201

- \* as above - but with a stronger rail clamp



## 595 lockable rearsight unit

- \* all rearsights in today's market suffer from backlash or miniscule repositioning of the peep disc after every shot as a result of thread wear or machining tolerances
- \* our patented rearsight has the unique feature of being lockable, once adjusted, throughout its range of adjustment
- \* designed with silver stainless steel rollers between all moving surfaces - once set in position the simple cam lever is moved, locking everything in position
- \* machined from solid aluminium (no castings) for 100% precision
- \* attractively anodised for lasting protection
- \* new for 2001 - an increased range of adjustment
- \* micro-precision adjustment giving 1.5 mm bullet shift per click at 50 metres
- \* supplied with individual engraved serial number



## 595MC lockable rearsight unit in blue & silver

- \* exactly as 595 but blue and silver



## knowledge & understanding

### 595 developing a new sight from a solid background

*The original design concept was to arrive at a rearsight assembly having no possibility of shift once the aim point was set. This quality is not found in any other current production rearsight.*

*In order that this be achieved we start with an aluminium alloy billet machined to extremely fine tolerances. No castings are used for any component. The choice of material had to be impervious to corrosion but also provide extremely high quality without excess weight.*

*The introduction of silver stainless steel rollers between adjusting and movable surfaces provided the means by which a clamping force could be applied to lock all moving parts in place. A simple cam lever compresses these surfaces bringing the clamping force to the rollers. A small quarter turn of this lever is all that is required to secure all settings.*

*The elevation and windage knobs have minute and accurate 20-click adjustments providing the smoothest possible operation. The threading for the iris attachment is continuous through the main body and allows use of any anti-glare tube on the front side - for example 559, 553, 554.*

*A side benefit of this rearsight is the absence of any need to lubricate. The tolerances and materials used make this a thing of the past. Pressure air is all that is needed now and again to remove any dust and dirt that may have accrued.*

*The strong clamp system allows attachment to a wide variety of rifle rails and is very smooth and easy to use. This rearsight is produced in either traditional matt black or, for those liking a little colour in their equipment, an attractive silver and blue.*





### 597 crossover rearsight prism (conforms to I.S.S.F. rules)

- \* ideal for shooters with defective vision in one eye or right hand shooters with a defective right master eye (or vice versa) who wish to sight with the other eye
- \* offset sight line displacement of 65 mm
- \* easily attached to standard 1" discs, or with **597A** or **597B** cradles, can be used with our iris and/or filter sets or magnifying diopter units
- \* finished in non-reflective matt black
- \* with 1" collar for rubber eyecup or the use of your normal eyeshield - **780**



### 597A & 597B

- \* special adaptor cradles suitable for **596** or **597** so that they may be used in combination with either the shorter range of irises (**A**) or the longer range with magnification (**B**)
- \* finished in non-reflective matt black



#### 597A

- \* for **510, 550, 563, 565, 566, 567, 500, 501MC & 512MC**



#### 597B

- \* for **530, 530-7, 551, 551-7, 570 etc., 564, 568MC, 544MC, 545MC & 546MC**



### 596 rearsight prism for 12mm sight line displacement

- \* gives a 12 mm displacement radially from the rearsight central sight line
- \* picture clarity is unaffected
- \* ideal for perfect positioning of head to cheekpiece
- \* easily attached to standard 1" discs, or with **597A** or **597B** cradles, can be used with our iris and/or filter sets or magnifying diopter units
- \* finished in non-reflective matt black
- \* with 1" collar for rubber eyecup or the use of your normal eyeshield - **780**



### 593 sighting system - specifically to enable canting

- \* a patented design giving identical degrees of cant to front and rearsight
- \* comprising one base for the rearsight and one completely new foresight unit
- \* the rearsight base swings radially around the receiver/rail/bore-line while the foresight is designed to swing radially around the bore-line
- \* far exceeds existing systems where only the rearsight has cant adjustment
- \* no need for any further form of adjustment once cant has been set
- \* available for: Anschütz: **593A**    Feinwerkbau: **593**    Walther: **593W**





### 553 rearsight anti-glare tube with polarisation filters

- \* screws into the front of any standard threaded rearsight
- \* twin polarisation filters allow infinite to control over incoming light across the whole sight picture
- \* easy adjustment with an external ring



### 559 anti-glare tube



### 780 rearsight eyeshield

- \* easily attached to your iris or disc
- \* standard 1" fitting
- \* simply pressed to your rearsight disc and is secured by its rubber cup
- \* has two planes of translucent material to give varying amounts of opacity
- \* available in white, 780W or black 780S - left (L) or right (R)



### 554 rearsight anti-glare tube with iris

- \* screws to the front side of any standard rearsight with internal threading
- \* helps eliminate incoming glare
- \* variable iris at the front end controls this light and reduces external target picture
- \* helps enhance depth of field and clarity



### 552 rearsight anti-glare tube combined iris

- \* an exceptionally slim and longer than usual anti-glare tube for attaching to the front of your rearsight
- \* incorporates an adjustable iris at its front end for control of the incoming light, centralisation of the foresight picture and control of the amount of white to be seen around the foresight
- \* iris mount plate can be moved on the tube for centralising to the eye
- \* rigid and secure when in position, easy to adjust whilst shooting
- \* easily removed
- \* fits all standard rearsights



### 781 rearsight eyeshield

- \* easily attached to your iris thread
- \* is held in place by the locking collar on your sight so that it will not move even if accidentally touched
- \* available in white translucent plastic

# keeping a level head

## 581 radially adjustable spirit level

- \* fits standard M18 foresights - with medium to slow bubble
- \* the level is screwed to the foresight and held in place by a locking collar for which a free spanner is provided
- \* once comfortable in your shooting position whatever angle of cant you use can be set by just turning the bubble ring
- \* the friction collar holds this setting without need of tools
- \* degrees are clearly marked on the rim for cross-reference



581-22 as 581 but for M22 foresights



## 591 foresight spirit level

- \* fits under the element clamping ring of your foresight
- \* is visible over the top of the foresight - see illustration
- \* designed to fit all standard M18 foresights
- \* easily repositioned if required

## 598 foresight spirit level

- \* screws inside the foresight
- \* seen inside the foresight and close to the aiming ring - thus eliminating need to move head or eye



## 591-22

- \* as 591 above but for the larger M22 thread

## 592 rearsight spirit level

- \* fits the front of your receiver rail
- \* is seen through the rearsight at the bottom of the sighting line such that reference to the bubble means absolutely minimal eye movement
- \* micrometrical positioning of the level is achieved with an easily identified wheel on the side of the base
- \* easily detached and cleaned



## 582 foresight spirit level for M18

- \* a sophisticated micro-adjustable level situated on two horizontal level bars retained by a collar under the foresight ring clamp - seen under the sight line
- \* allows positioning of the spirit level at any point along the 4" rails (10 cms)
- \* micrometrical positioning of the level is achieved with an easily identified wheel on the side of the base



## 582-22

- \* as 582 above but for the larger M22 thread

# squaring the circle

## knowledge & understanding

### Gehmann iris-foresights

*Different lighting situations give differing sight pictures to an individual shooter's eye. The use of an adjustable iris at the foresight helps regulate both the light coming from the target as well as a personal choice of the outside white size around the bull. Both maximise the chance of exact central location shot after shot. Using our free clip-on external ring the shooter can enlarge the blacked area around the foresight body. Further benefit is available with **Gehmann** magnifiers, polarising screens and external white area shields.*



535



536



537

### 535, 536 & 537 ring thickening foresight irises

- \* these patented irises are used on one side of the foresight only
  - \* enables both the internal diameter of the aiming ring to be set as well as the thickness of the ring itself
  - \* provides a quick and easy way to personalise your sight picture
  - \* ensures absolute consistency of aim point
  - \* manufactured for the internationally adopted M18 thread and with adaptor **538** the new larger M22 thread
- see order codes on following page:  
note that to comply with the latest I.S.S.F. rule limiting the overall foresight length to 50 mm a replacement foresight cylinder (**539**) is also included for the latest 19- & 20- series Anschütz foresight with our **535A**, **536A** & **537A** supplied free

### 548A, 548B & 548C square outline iris

- \* appears as a square to rectangular box with horizontal and vertical lines
  - \* has two side walls that adjust by simply twisting either of two calibrated external rings
  - \* adjustment range of both rings is the same
  - \* installed on one side of the foresight
- \* order code sizes listed below: M18 thread as standard  
**548A:** 2.4 - 4.4 mm  
**548B:** 4.0 - 6.0 mm  
**548C:** 2.9 - 4.9 mm
- \* **538** adapter is required for M22 foresights  
\* **539** adapter is required for attachment to the 6832 Anschütz foresight - this replaces the supplied body tube to comply with I.S.S.F. rules



535A



### 538 adaptor collar for M22 sights using M18 irises

- \* for use of M18 sights in using M22 bodies



### 539 radial cant tube for Anschütz

- \* enables irises **535**, **536**, **537** and the new **548** series to be used on Anschütz 6832 foresights without exceeding the excessive overall length of foresight rule





#### 520 & 520-22 irises

- \* appears as a normal metal element
- \* for size ranges see table below

#### 525 & 525-22 irises

- \* appears with fine crosshairs for cant
- \* for size ranges see table below



#### 522 & 522-22 irises

- \* appears as a clear perspex element
- \* for size ranges see table below



### IRIS-FORESIGHTS

order code	M18	M22	adjustment range
520 / 520-22 / 535 / 535A	X	X	seen as a metal element
522 / 522-22 / 536 / 536A	X	X	as a clear perspex element
525 / 525-22 / 537 / 537A	X	X	horizontal & vertical line
520 A / 522 A / 525 A	X		2.4 mm - 4.4 mm
520 B / 522 B / 525 B	X		4.0 mm - 6.0 mm
520 C / 522 C / 525 C	X		2.9 mm - 4.9 mm
520 A-22 / 522 A-22 / 525 A-22		X	2.4 mm - 4.4 mm
520 B-22 / 522 B-22 / 525 B-22		X	4.0 mm - 6.0 mm
520 C-22 / 522 C-22 / 525 C-22		X	2.9 mm - 4.9 mm
535 / 535A / 536 / 536A / 537 / 537A	X		inner ring: 2.4 mm-4.4 mm outer ring: 7.0 mm-9.0 mm
535 - 537A with 538 thread adaptor		X	inner ring: 2.4 mm-4.4 mm outer ring: 7.0 mm-9.0 mm

## knowledge & understanding

### about our iris-foresights

- \* they provide a wider range of adjustment, are shorter and manufactured in super matt anodised finish internally and externally and have their calibrations cut by laser
- \* models **520** & **535** appear as a standard metal element with horizontal metal bars while **525** & **537** use vertical and horizontal lines to assist consistent canting of the rifle. Once set for angle the iris can be locked in position with the locking collar. A spanner for this is provided free
- \* models **522** & **536** use glass (not perspex) specially finished on optical machinery to eliminate any distortion of the image
- \* the iris assembly is lacquered in production for smooth operation throughout a lifetime's use
- \* manufactured in M18 (18mm) for Anschütz, Diana, Hammerli, Steyr and Walther & M22 for Feinwerkbau and other larger foresights
- \* foresight irises enable target picture clarity to be maintained while shooting either the prone or three position disciplines



### special thread irises

**Parker-Hale** PH520A, PH520B and PH520C / PH522A, PH522B and PH522C  
**Tanner** TA522A and TA522C / TA525A, TA525B and TA525C  
**older M17** 520A17 and 520B17

### 531 iris & self-polarising screen to control light around iris

- \* iris adjustable from 2.9 to 4.9 mm - appears as a clear perspex element
- \* polarised outer screen round the iris eliminates incoming glare, thereby enhancing target picture clarity
- \* M18 threading to suit all major manufacturers' foresights
- \* supplied with free outer clip-on ring to enlarge the outer black profile of the standard foresight
- \* supplied with free spacers to allow clamping against other sight equipment on the same foresight



#### 531Q

- \* as **531** - with 520 horizontal level bars



### 527 foresight unit complete with variable ring thickness

- \* a complete replacement foresight
- \* inner ring adjustable from 2.4 mm to 4.4 mm
- \* outer ring adjustable from 7.0 mm to 9.0 mm
- \* supplied with **520A** iris and **522BC** to control the outer ring size



### 528 foresight with external iris

- \* enables existing users of our single iris to have ring thickness
- \* is a foresight unit supplied with **522BC** to control the outer ring diameter

### 529 foresight body only

- \* a replacement foresight body for all standard bases



### 532 foresight polarising screen

- \* screens out incoming glare around the element
- \* attaches to either end of the foresight
- \* may be used with a normal element or an adjustable iris
- \* 10 - 90 % light absorption



## 526-22 M22 foresight unit

- \* for Feinwerkbau, Anschütz and Walther - (a free base rail adaptor for Walther is supplied)
- \* rotational for cant
- \* set in position without tools
- \* easily read due to clear laser engraving
- \* extremely short overall - 26mm - this permits use of externally attached irises without exceeding the overall length under I.S.S.F. rules



526-18 as 526-22 but M18



## 524 foresight iris screen

- \* an outer iris screen for M18 foresights
- \* enables the white round the element ring to be size controlled
- \* assists in clearer definition of the aiming ring by eliminating unwanted glare
- \* assists shooters suffering blurred images by prolonging picture clarity and eliminating sight strain and eye fatigue



## 558 foresight anti-glare tube

- \* special push-fit tube that attaches to Gehmann M18, M17 and our special threaded irises only - will not fit any other makes of irises or foresights

558-22 as above - but for Gehmann M22 irises only !

## 524-1,5 foresight iris screen combined with a 1.5x MC lens

- \* provides 1.5 x foresight magnification
- \* enables screening out of unwanted white area around the aiming circle
- \* reduces glare for enhanced picture clarity over a longer period
- \* may be used in conjunction with either standard elements or our irises
- \* fits all standard M18 threads



## 533 coloured foresight screens

- \* 5 clear perspex elements in yellow, light blue, orange, fluorescent pink and red that provide an exterior tint to the foresight aiming ring
- \* assists occlusion of unwanted light

533A	M18	inside ring - 6mm
533C	M18	inside ring - 8mm
533A22	M22	inside ring - 6mm
533C22	M22	inside ring - 8mm

## 546 perspex elements

- \* for M18 foresight threads in clear or red
- \* for M22 in clear only
- \* sizes from 2.8 - 6.0 mm

## 542 perspex elements with black ring

- \* for M18 foresight threads in clear
- \* sizes from 2.7 - 5.2 mm
- \* 542-22 as above for M22

## 547 M18 element grip collar

## 547-22 M22 element grip collar



# multicoated optical screens



## 578 & 578-22 1.5x MC lenses

- \* 1.5 x magnifying foresight lens with the special MC coating available in M18 or the larger M22 threads
- \* laser centred at the time of coating to ensure maximum accuracy of coating
- \* designed to eliminate refracted light
- \* reduces the loss of light passing to only 2.4% - normally this will be around 8%
- \* provides a much improved image to the eye

- \* **578-22** for all larger threaded foresights
- \* **578** suitable for: Anschütz, Diana, Feinwerkbau, Hammerli, Steyr and Walther



## 580

- \* as **578** but threaded M17



## knowledge & understanding

### what we understand about seeing the light...

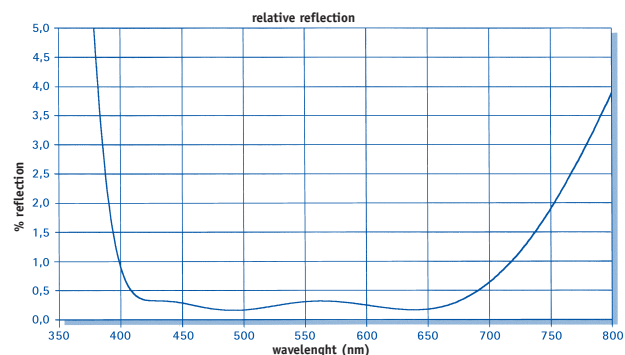
*When we stand in front of a pane of clear glass we see our own image. This is caused by a property of the glass which obstructs clear passage of light. Normally this obstruction will be something of the order of 4 to 10% loss. If we apply this to our foresight lens we understand that we will lose some of our sight picture clarity. Modern science helps us reduce this!*

*When our special optical coatings are applied within a vacuum the resultant lens immediately allows greater light to pass. Historically this only allowed improvement with one coating of 4% at best. If two or three coatings were used this was then improved to 8%.*

*With modern technology the number of layers can be increased to six and we then find the reduction of light is only 0.5% - a staggering improvement.*

*Further - the red and blue ends of normal visible light are expanded in band width. This expanded band is also controlled with our multicoating process to eliminate spectral distortion. Normal light visible through the human eye falls within the 380 - 780 nm but this improved range given by our coated lenses can be seen in the graph below.*

*The latest higher quality magnifying lenses are easily identified by their blue rims and are no longer glued to their outer case but installed per current jewellery trade practice by precision setting.*



## 586

- \* as **578** but with 1.3x lens
- \* technical specification as for **578**
- \* for all standard M18 foresights

## 586-22

- \* as **578-22** with 1.3x lens
- \* technical specification as for **578**
- \* specially sized for M22 threads



## 584 1.5x magnifying lens with 6x MC

- \* 1.5x magnification lens
- \* using the latest six layer MC technology
- \* improves light passage to a minimal 0.5% loss
- \* M18 threaded for all standard foresights

## 584-22 as 584 but for M22 thread

# a frame up ?



## 300 & 300P Gehmann shooters spectacle frames

- \* manufactured as **300** for the rifle shooter with a 23 mm lens holder
- \* manufactured as **300P** for the pistol shooter with a 37 mm lens holder
- \* finished in an attractive matt silver
- \* gives a comfortable and correct anatomical fit with perfect alignment
- \* totally adjustable in all senses (head band width, nose bridge height)
- \* interchangeability of lens holder sizes
- \* accepts all standard accessories from all leading manufacturers (this may require the use of an additional or alternative attachment clamp)
- \* comes complete in a carry case with a special small allen key for all settings
- \* can be complemented by any of our standard accessories: clip-on irises, eyeshields, eyeshields with hinged sideshields, sideshields, centering devices for correct alignment, filters for the aiming eye & matching filters (frosted) for the non-aiming eye, sunshields, spare lens holders, etc.
- \* **suitable for right or left hand shooters**

## 331 & 331P Knobloch shooters spectacle frames

- \* manufactured as **331** for rifle (with high nose bridge) and as **331P** for pistol (low nose bridge)
- \* suitable for all standard attachments such as iris, eyeshields, sunshields, polariser, etc.
- \* may be purchased as a complete boxed set (**350**)
- \* the full range of accessories can be found in our separate price list



## 332 as above with height adjustable nose bridge

- \* otherwise as **331 & 331P**

## 320 & 320P Varga 2000 shooters spectacle frames

- \* manufactured as model **320** for rifle with a 23 mm lens holder
- \* manufactured as model **320P** for pistol with a 37 mm lens holder
- \* offers the shooter an opportunity to purchase a complete shooters spectacle frame set comprising the fully adjustable frames (with soft earpieces for comfort) and a light eyeshield combined bent sideshield



## 327 & 328 specialised Varga shooting frame accessories

- \* further improvements to the basic Varga shooters spectacle frames now allow the use of some very fine but extremely specialised accessories
- \* **327** is a lens holder with a hinge in the vertical post
- \* for the shooter who has extreme lateral angle of sighting **328** is a new offset nosebridge support so that the lens holder does not foul it





### 390 clip-on iris attachment for ordinary glasses

- \* attaches to normal glasses
- \* a superb iris set in pressure plates to allow individual alignment
- \* improves depth of field and clarity

### 391 & 391S clip-on light & dark eyeshield

- \* attaches in exactly the same way as 390 and is designed to be totally compatible
- \* can be flipped up for normal vision
- \* suitable for either right or left hand shooters

### 392 colour filter set

- \* comprises three optical glass filters as a boxed set - yellow, brown & grey
- \* simple push fit for easy attachment to 390
- \* easy to clean



### 393 stick-on adjustable iris

- \* a mini-sized fully adjustable and exceptionally lightweight iris for sticking to your own spectacles
- \* can be radiused around the sticker
- \* the iris can be rotated around its support post
- \* exceptional benefit and quality at a minimal price



## knowledge & understanding

### about our iris-design

*Our latest innovation is found in the iris itself...*

*The surface coating on the material used for the construction of this iris is one of the latest technological breakthroughs in Gehmann's programme.*

*It is designed to permit flexing of the iris leaves without degradation of the material through prolonged use, to eliminate oxidation and to preserve the matt black anti-glare finish essential to any form of sight.*

*If you are a shooter wishing to use the latest technology Gehmann is the name with which to start...*



### 395 headband with iris

- \* velcro closure blue headband with adjustable iris to improve depth of field and sight clarity
- \* of greater benefit to the pistol shooter who does not want spectacle frames or their cost
- \* the iris can be precisely located within its frame to suit your own shooting stance

### 397 headband iris & eyeshield

- \* a velcro closure blue headband with iris and a light eyeshield combined sideshield
- \* all-round excellent value for money



### 385 Swisseye Trap and Skeet

- \* with a wide field of sight for trap and skeet disciplines
- \* length adjustable bows
- \* rigid polyamid frame
- \* 385 black frame with clear glasses
- \* 385B blue frame, coated glasses with orange tint
- \* additional coloured glasses optional: 386Y yellow; 386O orange; 386S dark grey



# dressing the part - top & bottom



revolutionary single point sling attachment

external shooting shoulder tensioning strap

## 401 double canvas jacket

- \* manufactured in mostly uncoloured natural canvas for improved rigidity - colouring weakens the natural materials' integrity
- \* designed and tested for one year prior to launch to the market
- \* incorporates softer suede and cloth materials in critical areas of comfort together with hide leather where both comfort and anatomical fit must be achieved
- \* external shooting shoulder tensioning strap for removing any tucks in the shoulder - fastened behind the shoulder
- \* revolutionary single point sling attachment incorporating an artificial material tag into which are punched holes (with metal rings round their outsides to give protection against wear) for the sling loop - these holes are set to give both height and angle of attachment options
- \* buttons are fitted with pierce-through threads to enable personal tailoring up or down the chest
- \* utilizes 'Top Grip' rubber on critical parts
- \* available made to measure

outer material 64% canvas + 36% leather  
 „Top-Grip“ rubber  
 inner material 100% canvas



three hook and velcro belt closure



curved two way zip



#### 426 double canvas trousers

- \* manufactured from identical unbleached material to that used on our **401** jacket and tailored to be comparable in fit and comfort
- \* remains rigid longer for extended wear life and greater support
- \* two way zips behind the leg guarantee elimination of tension in the garment behind the knee - one of these being curved to avoid interference from the zip line - adjustment is quick and easy
- \* velcro fastening from the waist to the top of the thigh combined with an inset lower gusset provide greater comfort when kneeling
- \* inclusion of a softer material panel let in over the thigh muscle also helps when kneeling
- \* our 'Top Grip' rubber is included at critical points on the seat and leg to eliminate any possibility of unnecessary movement
- \* complementing our **401** jacket - for the shooter wanting the best from modern design and technology
- \* available made to measure

outer material 100% canvas  
„Top-Grip“ rubber  
inner material 100% canvas



## knowledge & understanding

### changes to the 401 jacket

*Although months passed from conception to consultation with Frank Dobler and every item being double-checked prior to launch, this jacket has been modified to reflect the following changes:*

1. the tension straps for the shooting shoulder are outside
2. the top buttons were moved over and the cut at the top of the jacket altered so as to not interfere with the stock or supporting arm when standing
3. the suede front was increased in width for aesthetic appeal

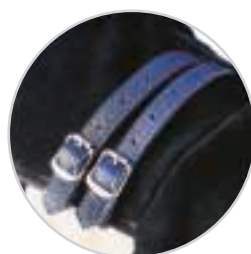
# dressing the part - his & hers

## 404 canvas & leather jacket for men

- \* a new design for men in rigid unbleached canvas and suede with an attractive blue trim
- \* anatomically cut to give maximum support and comfort in all three shooting positions
- \* pierce-through buttons enable personalised fitting
- \* over-the-shoulder tension straps remove any tucks in the shooting shoulder pad
- \* fully adjustable sling loop with metal retaining hook
- \* anti-slip rubber on the elbows to ensure security of position
- \* not available made to measure



fully adjustable sling loop



over-the-shoulder tension straps



## 427 double canvas trousers to match mens 404 jacket

- \* also manufactured primarily from unbleached canvas for rigidity they are colour matched with vertical panels and trimmed in blue
- \* anatomically cut for the best possible support in all three shooting positions
- \* waist band adjustment is with 4 extra wide metal loops and a clasp with support loops for a very wide belt also provided in colour matched blue leather
- \* velcro-fastening fly
- \* oblique soft panel inserts at the top of the thigh to eliminate any possibility of tension while kneeling
- \* three-quarter length vertical two-way zips behind the leg
- \* ambidextrous fitting
- \* not available made to measure

jacket: outer material 50% canvas, 50% leather  
rubber  
inner material 100% canvas

trousers: outer material 100% canvas  
rubber  
inner material 100% canvas





#### 404R canvas & leather jacket for ladies

- \* as 404 but red trim for the ladies
- \* designed for the man's partner this is the first deliberately matched combination for couples
- \* offered in the smaller size range only required for ladies



buttonholes with red leather surround



four hook and velcro belt closure



#### 427R double canvas trousers to match ladies 404R jacket

- \* as 427 but red trim to match 404R ladies jacket above
- \* manufactured in the smaller size range for ladies

jacket: outer material 50% canvas, 50% leather  
rubber  
inner material 100% canvas

trousers: outer material 100% canvas  
rubber  
inner material 100% canvas



# dressing the part - at reasonable prices



outer material 65% canvas, 35% leather  
rubber  
inner material 100% canvas



## 400 double canvas shooting jacket

- \* primarily of double canvas, this is now Europe's most successful shooting jacket both in terms of sales and value-for-money
- \* extremely rigid but designed with softer panels in critical positions to give comfort as well as support
- \* suitable for all shooting disciplines
- \* anatomically cut to be a perfect fit in the shooting position
- \* tension straps over the shooting shoulder to eliminate tucks in the material which may disturb the shooting position
- \* anti-slip rubber incorporated at shoulder and elbows
- \* suede leather on the front to prevent movement of the supporting arm
- \* personal sizing possible with our pierce-through threaded buttons
- \* not available made to measure



outer material 100% canvas  
rubber  
inner material 100% canvas

#### 402 double canvas shooting jacket

- \* designed to be the same style as model 400
- \* does not have the suede leather front panel
- \* colours are mint green & lilac  
- see illustration
- \* not available made to measure



#### 423 canvas trousers

- \* made from identical material to the 400 jacket with colours to match
- \* for right or left hand shooters
- \* front thigh cut-outs for kneeling - full length zips to assist comfort
- \* velcro fastening with a 4 hook waist fitting and a bolstered seat to give perfect support
- \* anti-slip rubber to seat & knees to eliminate unnecessary movement
- \* the very best of materials and the greatest support for the minimum of expense
- \* not available made to measure

outer material 100% canvas  
rubber  
inner material 100% canvas



# dressing the part - our latest models



outer material 98% canvas, 2% leather  
'Top Grip' rubber  
inner material 100% canvas

## 419 double canvas jacket

- \* a double canvas design with rigid outer layer over a softer inner lining
- \* elasticated material under the arm and on the inner elbow joints give good comfort while in the shooting position
- \* 'Top Grip' rubber at shoulder and elbow
- \* tension straps on shooting shoulder to eliminate tucks in the material when the butt is positioned to the shoulder
- \* personal sizing with pierce-through buttons
- \* colours are mainly white with black
- \* available made to measure



## 422 double canvas trousers

- \* double canvas support for all positions is guaranteed
- \* manufactured in black and white to complement our 419 jacket
- \* velcro fastening fly with 3 hook waistband (spans 2")
- \* broad black leather waistband to accommodate any broad belt
- \* extra long two-way zips to relieve rear leg pressure and aid comfort when the legs are bent
- \* 'Top Grip' rubber non-slip surfaces to match the jacket
- \* available made to measure

outer material 95% canvas, 5% leather  
'Top Grip' rubber  
inner material 100% canvas



outer material 97% canvas, 3% leather  
'Top Grip' rubber  
inner material 100% canvas

#### 414 double canvas jacket

- \* suited to today's top class shooters these jackets provide outstanding support
- \* the double canvas construction affords maximum support in all three disciplines however the use of softer, elasticated black material at the under-arm and inside of the elbow allow for greater comfort
- \* two tension straps are included over the shooting shoulder to eliminate tucks on the shoulder pad which may disturb the butt position
- \* 'Top Grip' rubber non-slip surfaces
- \* fully swivelling and infinitely adjustable sling attachment
- \* personal sizing across the chest is possible with our pierce-through threaded buttons
- \* colours are overall white with navy panels
- \* available made to measure



outer material 95% canvas, 5% leather  
'Top Grip' rubber  
inner material 100% canvas



#### 420 double canvas trousers

- \* mainly navy blue to complement our 414 jacket
- \* designed with a soft black leather panel on the upper part of the thigh on the opposite leg to the shooter's shoulder
- \* velcro fastening waistband and fly
- \* buttons for braces
- \* extra long two-way zips aid comfort when the legs are bent
- \* joints specially cut to aid comfort
- \* matching 'Top Grip' non-slip surfaces to jacket
- \* available made to measure

# dressing the part - traditional lines



outer material 100% leather  
rubber  
inner material 100% canvas

## 418 leather jacket

- \* anatomically cut to ensure a perfect fit when in the shooting position
- \* elasticated straps under the arm and on the inner elbow joint give greatest support and comfort
- \* tension straps on the shooting shoulder to eliminate material tucks
- \* anti-slip rubber incorporated at the shoulder and elbows
- \* in an attractive blue, turquoise & lilac with a turquoise front pocket
- \* personal sizing possible with our pierce-through buttons
- \* not available made to measure



outer material 55% leather, 45% canvas  
rubber  
inner material 100% canvas

## 403 leather & canvas combination jacket

- \* particularly well suited for three position shooting
- \* a great jacket for the club shooter
- \* has a navy suede front, petrol blue canvas back & canvas lining
- \* midnight blue suede shoulders and sleeves
- \* cotton gussets at the inside elbow
- \* excellent support at minimal expense
- \* personal sizing possible with our pierce-through buttons
- \* not available made to measure



## knowledge & understanding

*Shooting clothing is critical to any good shooter - excellent shooting clothing is even better - this is why **Gehmann** has become the market leader.*

*Proper support both from jackets and trousers, as well as ancillary garments, is the cornerstone to building good scores and confidence in yourself. Maintaining a stable position throughout the shoot, whether prone or three position shooting, is obviously of paramount importance.*

*Many shooting garments look the same however their quality and their design are open to question. If you want the best - trust **Gehmann**, the experts.*



# ..your final choice



## 406 double canvas jacket

- \* the latest in the Gehmann range - this double canvas jacket forms part of a new style of suit designed to give all that the top shooter requires together with great aesthetic appeal
- \* the introduction of a cut-away curve to the front opposite side helps comfort when in the more extreme positions to be found when shooting three position
- \* design panels are for extracomfort while adding to the style of this jacket
- \* soft inserts at all critical joints to eliminate any pressure points
- \* twin over-the-shoulder tension straps to eliminate tucks in the butt pad
- \* size adjustable with our threaded pierce-through buttons
- \* colours navy and white
- \* not available made to measure

outer material aus 70% canvas, 30% leather  
rubber  
inner material 100% canvas



## 407 double canvas trousers

- \* double canvas trousers designed to match our 406 jacket
- \* in navy blue & white with designer panels to assist while shooting but also to give style to the complete suit
- \* with velcro fly fastening and 4 hooks to the waist
- \* full-length rear of the leg two-way zip to remove pressure points when in the kneeling position
- \* provides rigidity to stop unwanted movement in any position
- \* not available made to measure

outer material 100% canvas  
rubber  
inner material 100% canvas



## knowledge & understanding

### Top-Grip

*This material was created many years ago for use on **Gehmann** jackets, trousers and gloves.*

*It is now the accepted standard for the industry where the greatest tactile grip is required.*

*Specifically used in areas where the shooter makes contact between himself and other parts of his shooting equipment - or where two areas requiring absolute security of position are essential. The material is attached to a pliable rear surface which assists profiling, machining and attachment to the area in question. When pressure is applied the Top Grip high spots depress and provide a desirable non-slip contact area. This platform is one **Gehmann** use to full advantage.*

*Although expensive in production it has no substitute. **Gehmann** want the best for you - so cost is set aside in their aim for quality.*



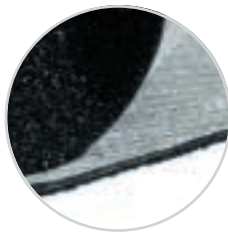
'Top Grip' on canvas

### 281 'Top Grip' rubber

- \* one sheet of 'Top Grip' rubber for repairing old or worn surfaces or fitting 'as new' to another garment
- \* sheet size 90 cms x 45 cms
- \* 2 mm thick

### 282 'Top Grip' rubber

- \* sheet size 90 cms x 90 cms
- \* 2 mm thick



### 428 belt

- \* made of the same black artificial material used for our non-stretch 40 mm I.S.S.F. single point sling - with double hook step adjustment



### 429 spare pierce-through buttons

- \* individual threaded pierce-through studs and buttons to suit any jacket
- \* available in small or large - black or white

cork filling



### 490 & 492 leather kneeling roll

- \* manufactured of best leather
- \* quality end zip and leather carry handle
- \* colours blue, black, red or green
- \* 492 as 490 but cork filled

### 424HK Dutch-cross braces

- \* 35 mm wide with button retention
- \* traditional style in blue or yellow
- \* great support for your Gehmann shooting trousers

### 424K braces

- \* 35 mm wide with snap clip retainers
- \* colours - blue or yellow



50% canvas  
50% polyacryl

### 491 & 493 vistram kneeling roll

- \* design as 490 but artificial material
- \* hard wearing
- \* black only
- \* 493 as 491 but cork filled

### 494 & 495 leather kneeling roll

- \* manufactured in the best leather
- \* external strips of non-slip rubber
- \* colours - turquoise, lilac & black
- \* 495 as 494 but cork filled



#### 475 shooting vest and leggings

- \* extremely elastic to provide a snug fit and avoid high spots under other shooting clothing
- \* anti-allergic for all skin types
- \* incorporates a no.7 sun factor protection within the material
- \* designed for warmth in winter and coolness in summer
- \* resistant to absorption of other colours and maintains its own colour longer as a result
- \* easy-care, easy-wash, quick-drying material
- \* very long wearing
- \* manufactured with ecological sensitivity
- \* black 100% poly mix

476 vest - sml, med, lge, x.lge

477 leggings



#### 478 shooting socks

- \* designed to give comfort, support and warmth while shooting in all environments
- \* ideal with the undergarments illustrated above
- \* suitable for use under shooting boots

30% canvas, 24% Calesa, 24% polyamid,  
12% Robur, 10% Elastan

#### 450 shooters carry-all bag

- \* constructed of lightweight nylon
- \* has a rigid base with two large roller wheels and a tow loop handle for dragging
- \* one end and two large side zip pockets
- \* two carry handles and one strong shoulder strap
- \* 75 x 36 x 33 cms.
- \* black only



50% canvas, 50% polyacryl

#### 425B Mouche pullover (blue)

- \* elasticated rib stitch for a snug fit to eliminate any high points under the jacket
- \* thin elbow pads to add a little comfort - particularly when shooting prone
- \* two way zip for speedy fitting

#### 425R Mouche pullover (red)



#### 464 5 finger glove

- \* made of best quality leather
- \* maximum comfort during shooting
- \* full width elasticated wrist support
- \* non-slip rubber for maximum security
- \* available for right or left hand shooters
- \* sizes extra small, small, medium, large & extra large



#### 460 5 finger glove

- \* manufactured specifically for the club shooter seeking best value for money
- \* utilises quality leather and super internal padding for ultimate comfort
- \* anatomically cut for perfect fit
- \* elasticated support at back of wrist
- \* secure rubber for tactile feel
- \* colours - lilac & midnight blue
- \* sizes extra small, small, medium, large & extra large



a helping hand..

#### 469 & 470 5 finger gloves

- \* manufactured from the finest quality leather
- \* anatomically cut for a perfect fit
- \* padded internally for maximum comfort
- \* stitched to eliminate unwanted pressure points against the rifle stock
- \* utilises our 'Top Grip' rubber to eliminate movement
- \* elasticated support at back of wrist
- \* first & second finger web gives added support when shooting all disciplines
- \* 469 colours - red & white
- \* 470 colours - turquoise & lilac
- \* sizes 7 - 8 - 9 - 10 & 11



#### 466 half finger cover glove

- \* recently redesigned to be anatomically perfect for fit when in the shooting position
- \* for shooters preferring tactile feel of their rifle or who cannot use normal gloves with fingers enclosed
- \* ideal for use in warmer temperatures
- \* pale blue suede, black, with white pimple rubber
- \* sizes small, medium, large, extra large & extra extra large



#### 461 5 finger glove

- \* manufactured from the finest leather
- \* redesigned to give best fit when holding the rifle in the shooting position
- \* new pattern pimple rubber used across the palm and back
- \* superb and comfortable padding internally
- \* anthracite green, black & white
- \* sizes small, medium, large, extra large & extra extra large



## knowledge & understanding

### Shooting gloves

*The reason we strive so hard to produce a glove that is both anatomically perfect for the hand and gives confidence to the shooter - is the same for all **Gehmann** products - searching for perfection as a whole.....*

*It is imperative the glove forms part of this picture - not just one item. Top scores are only achieved with modern equipment that eliminates any chance of movement shot to shot. If evidence is required look at the shooter next to you wearing a worn and smooth 10 year old glove and ask what chance they have of a steady aim or support.*

*Eliminating movement in all your equipment is the aim of the game - so try and see the bigger picture and make sure you give yourself a hand when next you use a rifle - treat yourself to a new **Gehmann** glove. Possibly one of the cheapest and most productive items of equipment you can buy....*

#### 468 5 finger glove

- \* manufactured from the finest leather
- \* this glove is top of our range
- \* anatomically redesigned for 2001 it is cut and shaped for the hand when in position on the rifle
- \* full width elasticated strap at the wrist for support
- \* large expanses of 'Top Grip' rubber
- \* attractively finished in blue & grey
- \* sizes small, medium, large, extra large & extra extra large



# strapped in properly..

*available right or left hand*



## 435 micro-adjustable sling (green)

- \* manufactured from green non-stretch artificial material
- \* designed to be infinitely adjustable for length
- \* alloy adjustment wheel and thread that are easily accessible during use to set precise length from arm to rifle
- \* cuff start point is locked with two screws through the sling
- \* adjustment of cuff size is by double pronged buckle set in position on the outside of the arm
- \* cut-out in the cuff fits the sling hook attached to our jackets - this hook is available as a spare - 439
- \* rubber grip within the cuff eliminates any possible creep



## 436 artificial sling (green)

- \* design as 435 above but without micro-adjustment



## 436W artificial sling (white)

- \* as 435 above but without micro-adjustment
- \* for technical specification see above



## 438 40 mm sling hook

- \* designed to suit any I.S.S.F. width sling (40mm) and any standard sized sling swivel (40mm)

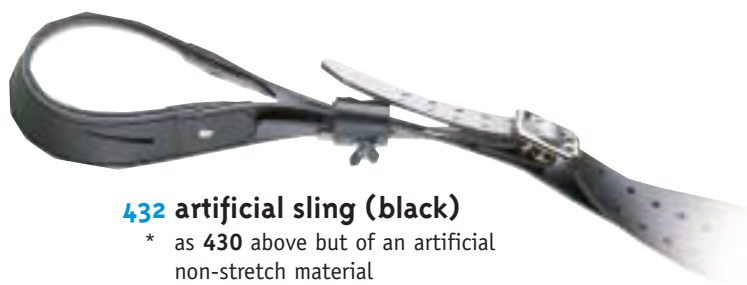


## 430 leather sling

- \* best quality leather with rubber inside the cuff
- \* stepped adjustment round cuff with keeper loop and double prong buckle for length to rifle

## 433 junior leather sling

- \* as above, for juniors & ladies



## 432 artificial sling (black)

- \* as 430 above but of an artificial non-stretch material



## 437 artificial sling

- \* manufactured from composite nylons
- \* three simple sliders lock cuff position, overall length of the sling plus the overlap
- \* green

## 439 coat hook

- \* simple accessory that can be stitched to any sleeve to provide an anchor to support or secure your single point sling





# & stand up straight!



## 482 leather shooting boots

- \* anatomically cut to give ultimate support and comfort when used in all disciplines
- \* constructed over a rigid foot bed to ensure the maximum support to the sole of the foot as well as elimination of torque which can allow the foot to twist and spoil a good shoot
- \* manufactured in the very best leather available
- \* new rigid flatter sole bed for maximum support
- \* velcro heel fastening
- \* standard front lacing with clip over-fastener
- \* colours - blue & black
- \* sizes 3 1/2 to 13



new rigid flatter sole bed



## 483 pistol shoes

- \* anatomical footbed
- \* leather throughout
- \* black with ochre piping
- \* sizes 3 1/2 to 13



## 481 leather shooting boots

- \* material and cut as 482 but with suede side panels
- \* turquoise, lilac & black
- \* sizes 3 1/2 to 13



## 489 boot tensioner

- \* designed to ensure perfect shape of your boots while they sleep....

## knowledge & understanding

### building from a solid foundation

*The importance of eliminating as much movement as possible during any shooting discipline is now well understood. What seems quite remarkable is that shooters recognize this and take great trouble to equip themselves with many close-fitting items of clothing but completely forget about one of the weakest areas of control in our bodies - the ankles. Rigid support at the ankles is a necessity if finer areas of positional control are to have any significance.*

*It is obvious this is essential for standing or kneeling but many shooters are guilty of under-estimating the importance of boots - even for prone shooting.*



# if you want to get ahead



100% canvas

## 441 shooting cap (olive green)

- \* popper strip adjustment for sizing
- \* complete with sideshields which can be positioned to suit
- \* olive green



80% canvas  
20% polyester

## 445 summer cap (red)

- \* designed for use in summer or in very hot regions
- \* completely open top
- \* fully adjustable for all sizes
- \* extended peak for greater shading
- \* sideshields can be positioned to suit
- \* red



## 445B summer cap (blue)

- \* as 445 description - blue



65% canvas  
35% polyester

## 443 shooting cap

- \* velcro closure for any head sizes
- \* inner sweatband and ventilated top for coolness
- \* velcro fastening sideshields and eyeshield for personal settings
- \* red & blue



## 443G shooting cap - green

- \* specification as 443
- \* green and black

## 444 Champion elasticated headbands

- \* elasticated towelling headbands in a choice of colours - see list below
- \* complete with an eyeshield for the non-aiming eye

## 449 Gehmann velcro closure headbands

- \* with velcro closure for perfect fit
- \* may be cool washed

code	band	eyeshield
444RW	in red	- in white
444RG	in red	- in grey
444BW	in blue	- in white
444BG	in blue	- in grey
444GW	in grey	- in white
444GG	in grey	- in grey
449	in blue	- in white
449G	in blue	- in grey



80% canvas  
10% polyamid  
10% other materials

# Gehmann teamwear

and special house products....



100% canvas

## 860W teamwear polo-shirt

- \* 100% cotton quality
- \* 'Fruit of the Loom' shirt
- \* 'Team Gehmann' logo on left sleeve and circular logo on the chest
- \* white
- \* small, medium, large and extra large



## 864 teamwear rucksack

- \* in Gehmann dark blue house colour with the company logo 'Team Gehmann'
- \* lightweight but rugged rain-proof nylon
- \* multi pocketed externally with good zips
- \* padded shoulder straps with adjustment
- \* hanging loop

## 866 Gehmann special tool

- \* a special multi-tool screwdriver set contained within a black handle
- \* comprises a snap-in magnetic bit holder that locates in the handle when closed
- \* 7 bits total - 2 x screwdriver, 2 x Philips pattern, 3 x pozi-drive (SW.2.5, SW.3 & SW.4mm)
- \* the handle accommodates 6 of the 7 bits



80% canvas  
10% polyamid  
10% other materials



100% canvas

## 862 Teamwear cap

- \* in Gehmann dark blue house colour with
- \* 'Team Gehmann' company logo
- \* longish peak
- \* multi-adjustable sizing for all heads

## 868 teamwear headband

- \* in Gehmann dark blue house colour
- \* soft towelling
- \* velcro-fastening behind the head



## Gehmann wall-posters or stickers

- \* available free of charge - upon request
- \* suitable for clubhouse or shooter's box
- \* as long as stocks last !



## Gehmann pinbadge

- \* issued free with each Teamwear item bought - while stocks last.....



# MORINI

- the Olympic champions choice...

Olympic games  
Sydney 2000

gold

silver

bronze



## TECHNICAL SPECIFICATION

**Morini 162EA 162EA-SHORT**

calibre	4.5	mm/.177	4.5	mm/.177
length	410	mm	370	mm
height	140	mm	140	mm
width	50	mm	50	mm
weight	1020	grms	960	grms
barrel length	240	mm	190	mm
sight radius	310-360	mm	300-350	mm

electronic mechanism

## M2400 Morini 162EA pre-charged match air pistol

- \* can any pistol be better than one winning every medal grade at Sydney?
- \* uses pre-charged natural air - eliminating temperature and pressure variation problems associated with CO<sub>2</sub>
- \* complete peace of mind over usable pressure remaining due to each of the two detachable cylinders having its own front pressure gauge
- \* sufficient air for a guaranteed 180 shots when charged to 200 bar
- \* unique low pressure lock intercepts the loading gate to stop inconsistent velocity on later shots should any seal fail whilst shooting
- \* electronic trigger and dry-fire mechanism are unique to the 162E's above all other match air pistols - in that both operations are felt to be the same on the trigger finger - pulling only closing a switch, not a mechanical interlink system with partial disconnect
- \* twin AAA batteries (available anywhere) give up to 15,000 shots
- \* on/off switch with auto cut-off if accidentally left on and unused
- \* pulse red light to indicate battery condition satisfactory for shooting
- \* Lothar Walther precision barrel for the ultimate in accuracy
- \* Morini's own factory anatomical adjustable wooden grips - right or left
- \* muzzle compensator fitted as standard to eliminate barrel flip
- \* patented rearsight with adjustment of the cut-out width
- \* 5.0mm foresight as standard - 4.0, 4.5, 5.5 & 6.0mm extra!
- \* matt black non-reflective action body and blued steel barrel with two different colour cylinders for ease of identification and charging
- \* in a rigid carry case with red plush lining profiled for pistol and factory standard accessories - provision for match pellets & scoring gauge
- \* complete with charging adaptor (to standard DIN thread), all tools that might be required for stripping, full instructions and guarantee

## M2500 Morini 162EA-Short

- \* as 162EA but with shorter barrel
- \* only 960 grms overall weight
- \* 200-bar operating pressure is good for 150 safe shots
- \* suitable for ladies or juniors or shooters with weaker wrists



# Morini 162.M

*quality at a price you cannot match*



## M2300 Morini 162M

- \* design as for the model 162EA but incorporating a mechanical trigger system rather than electronic
- \* supplied with one detachable cylinder as standard - others available (extra)
- \* cylinders with front pressure gauge
- \* low pressure lock to loading gate for safety
- \* cased with adaptor, etc., as standard - see 162EA details

## Supplied as standard...

a rigid, profiled and red plush lined carry case for one pistol including the following useful accessories:

- 1: brass charging adaptor to DIN thread
- 2: blued discharge tool
- 3: complete set of tools for field stripping
- 4: cut-out for second cylinder if required later
- 5: additional cut-outs for one tin of standard match air pellets and one plug scoring gauge



## TECHNICAL SPECIFICATION

### Morini 162M

calibre	4.5 mm/.177
length	410 mm
height	140 mm
width	50 mm
weight	1020 grms
barrel length	240 mm
sight radius	310-360 mm

mechanical mechanism



## M230 special-design cylinders

- \* special artwork design air cylinders e.g. national flag, club, team or artistic scenes, can be supplied for the 162M & 162EA - please enquire



## M260 barrel weight - 60 grms

- \* attaches to the 162 barrel

## M262 cylinder weight - 80 grms

- \* attaches to the 162 air cylinder

## M261 cylinder weight - 60 grms

- \* attaches to the 162 air cylinder

## M281 compensator

- \* for all 162 models

## M298 conversion kit for Feinwerkbau CO<sub>2</sub> pistols

- \* converts your Feinwerkbau CO<sub>2</sub> pistol to a modern pre-charged pistol (C5, C10, C20, C25 & C55)
- \* supplied cased with two detachable cylinders each with pressure gauge, charging adaptor & discharging tool



# MORINI CM22M .22l.r. pistol now with aluminium frame



## TECHNICAL SPECIFICATION Morini CM 22M

calibre	.22	lr
length overall	300	mm
height	140	mm
width	50	mm
weight M2800	1210	grms
weight M2800-ALU	950	grms
barrel length	130	mm
sight radius	220	mm

action: mechanical

## M2800 Morini 22M Standard - .22 lr

- \* a matching family of Standard pistols with some revolutionary features !
- \* direct bullet feed from magazine to breach rather than the traditional style of feed between magazine lips causing rim or bullet-nose damage, misfeeds and jams
- \* the hammer spring tension can be adjusted by the shooter
- \* the pistol can be regulated to any ammunition velocity
- \* has the lowest sight line to the hand of any current production small-bore Standard pistol
- \* rearsight fitted with adjustable elevation, windage and cut-out width
- \* complete disassembly made easy by the use of only two main screws - one through the grip and one for the frame assembly
- \* manufactured of steel and alloy only - no artificial materials used that may cause wear or malfunction problems
- \* a full range of adjustable grip options available
- \* supplied in a rigid factory carry case
- \* conversion kits from .22 to .32 not available for this dedicated .22 design

### \* M2800-ALU

- \* designed for extreme lightness and balance this latest model is mainly constructed of alloy with a steel barrel
- \* total weight unloaded is only 950 grms

## TECHNICAL SPECIFICATION Morini CM 32M

calibre	.32	S&W long
length overall	300	mm
height	140	mm
width	50	mm
weight	1260	grms
barrel length	130	mm
sight radius	220	mm

action: mechanical



## M2900 Morini 32M .32 S&W long standard pistol

- \* designed to be compatible with the .22lr. variant above
- \* this pistol is for the full-bore discipline only
- \* factory fitted with a 1360 grm adjustable trigger
- \* adjustable anatomical handgrip
- \* 6-shot magazine
- \* supplied in a rigid factory carry case



# Morini CM84E free pistol



## M2700 Morini 84E free pistol (.22lr)

- \* electronic mechanism providing absolute minimum lock time from trigger release to the moment of firing
- \* ball & socket pivotal points provide a friction free action
- \* the possibility of accidental release - due to exceptionally light trigger pressures - is guarded by a light beam sensor which spans the trigger guard. Not until the finger is correctly positioned to pull the trigger will this circuit close to open that of the trigger
- \* trigger pressure options are available - it is factory fitted with one that offers 0 - 22 grms but the pistol is also supplied with two different pressure springs that give the ranges of either 22 - 160 grms or 160 - 300 grms
- \* dry-fire is possible
- \* battery life gives approximately 5,000 shots
- \* Morini wrap-around anatomical grips - right or left hand - are factory standard
- \* Lothar Walther precision barrel
- \* fully adjustable rearsight with the patented adjustable width cut-out
- \* muzzle compensator available extra (M271)
- \* standard with 5.0mm foresight - options are: 3.5, 4.0, 4.5, 5.5 & 6.0 mm at extra cost
- \* supplied in a rigid case with instructions, tools, cleaning rod and guarantee

### TECHNICAL SPECIFICATION Morini CM 84E

calibre	.22	lr
length overall	495	mm
height	150	mm
width	70	mm
weight	1240	grms
barrel length	290	mm
sight radius	331-426	mm

electronic mechanism



## M190 aluminium carry case

- \* with Morini logo - for all 162 pistols - the CM22M & CM32M



## M191 aluminium carry case

- \* with Morini logo - for the CM84E

# Morini anatomical grips

- the product that made Morini famous

<i>make</i>	<i>model</i>
Colt	Government, Python
F.A.S	601, 602, 603, 604, 606 & 607
Feinwerkbau	65, 80, 90, Mod. 2, 100, 102 & 103, C10, C20, C25, C5, C55, P30 & P34
Hammerli	150 & 152, 208 & 215, 230 & 232, 240, 280, SP20, 480, 480K & 480K2
Morini	CM84E, CM102E, CM162E, CM162EA, CM162EA-SHORT, CM162M, CM22M, CM22M-ALU, CM32M
Sako	22-32, Triace, Triace Short
Steyr	LP1, LP5, LP1-P & LP5-P, LP10 & free pistol
Smith & Wesson	H.B.41, 'K' & 'L' frames, M.52, 686-586
TOZ	TOZ 35
Unique	DES.69 UIT Standard, DES.69U, DES.2000-22 short, 69U centre-fire
Walther	CP.1, CP.2, CP.2 Match, CP.3, CP.3 Match, CPM Atlanta, CPM.1, LPM.1, 200, 201, GSP..22lr, GSP..32 S&W, KSP.200, OSP, OSP.2000
alternative manufacturers	Beretta 92 & 98, Dan Wesson, Erma ESP, IJ.35, Korth Revolver, Manurhin MR.73, Olympic .22lr, Ruger MKII, SIG P.210



all our air bottles are tested and German certificated for 10 years

## **M221 4 ltr master refill bottle**

- \* for 200 bar use - tested to 300 bar
- \* fitted with anti-roll handle
- \* comes with manometer & connector

## **M295 Morini grip compound**

- \* compound and hardener to provide an absolutely perfect hand to pistol grip shape - easy to apply

## **M222 5 ltr master refill bottle**

- \* for 200 bar use - tested to 300 bar
- \* fitted with anti-roll handle

## **M223 10 ltr master refill bottle**

- \* as M222 above

## **M224 as M221 without gauge**

- \* as M221 but without brass connector or pressure gauge



## **M220 200-bar pump**

- \* now even easier priming with a system that can be used by a child
- \* easily detachable rigid footplate
- \* inclusion of a pressure gauge
- \* condensation bleed valve at base
- \* threaded for all DIN connectors
- \* 210 cu cms. per stroke volume
- \* 162E requires adaptor **M220A**





#### **F4007 Gehmann 609 - left hand**

- \* as above but for the left hand shooter

#### **F4000 Gehmann 609 pre-charged air pistol**

- \* single detachable cylinder with independent pressure test gauge
- \* fully adjustable trigger and rearsight
- \* Morini adjustable grip - large or small
- \* charging adaptor and discharge tool
- \* rigid carry case for perfect protection
- \* unbeatable price for a pre-charged pistol!

#### **TECHNICAL SPECIFICATION**

##### **GEHMANN AP609**

calibre	4.5 mm/.177
length	410 mm
height	142 mm
width	50 mm
weight	980 grms
barrel length	250 mm
sight radius	360-380 mm

mechanical mechanism

#### **FX2000 FX2000 .177 pre-charged air rifle**

- \* 8-shot rotary magazine - easily loaded and installed
- \* walnut stock
- \* easily re-charged with air using the probe (supplied) that connects to any flexi-hose - simply plug this into the front of the main air cylinder and charge from bottle or pump
- \* designed for use with 'scopes - no standard sights fitted
- \* can be equipped with sound moderator (extra)
- \* **FX2100** 14, 15 or 25 joule



#### **FX2000-22 FX2000 .22 pre-charged air rifle**

- \* all specifications as above but calibre .22



#### **M208 flexi-hose**



#### **M210 Gehmann compressor**

- \* a high quality product designed for stand-alone use - either by the individual or Club
- \* unbelievable low price!
- \* supplied with its own manometer
- \* auto cut-off on motor if ever overloaded
- \* integrated dirt and moisture filter
- \* triple piston system
- \* designed for nominal 200 bar charging at 18 litres per minute
- \* pressure relief valve is factory set at 230 bar for safety
- \* size: 59 x 37 x 30 cm, weight 27 kg
- \* 230 volts operation (110V version without surcharge)

#### **CHARGING EXAMPLES:**

Morini air pistol cylinder	- to 200 bar	1 minute
standard match air rifle cylinder	- to 200 bar	2.5 minutes





### W1230 Walther LP300 pre-charged

This latest design incorporates a new recoil damper system and ported front compensator, is with horizontal detachable cylinders each with end gauge, under-cylinder counter balance weight bar, laminated wood grip adjustable for all angles plus hand depth, has trigger blade reach and angle adjustment and a rearsight with all blade adjustments and a foresight that is rotated to give varying blade widths. Supplied with charging equipment and tools in a rigid carry case.

### S750 Steyr LP10-P pre-charged

An advance on the previous model this pistol is with two silver cylinders which can be pressure tested by an independent gauge supplied. The barrel and shroud are ported at varying positions along the top and muzzle to control movement while firing. This shroud can support barrel weights (extra). Now with much larger load lever and pellet platform. Dry-fire mechanism fitted together with a Morini adjustable grip as standard. Adjustable rearsight and interchangeable foresights (extra). Supplied with charging adaptor, tools and a small quantity of VFG shoot-through felts.



### S730 Steyr LP5-P 5-shot rapid fire

Designed in appearance like the single-shot LP10-P it is supplied with the same twin silver detachable air cylinders, has independent pressure reading gauge, slightly shorter overall length and sight radius, comes with two 5-shot magazines (others extra) and will rapid fire at least 120 continuous shots from one cylinder. Morini adjustable grip, charging adaptor, tools and handbook as standard.

### H1040 Hammerli AP40 pre-charged

A completely new design from Hammerli making the most of every conceivable material to gain lightness and an action of minimal size. The trigger is sited right on the centre of gravity to eliminate all possibility of rotation at let-off. Supplied with their 'High Grip' fully adjustable artificial grip the pistol has a detachable cylinder with end gauge, fully adjustable rearsight and trigger position and twin muzzle ports for elimination of barrel movement.



### F650B Feinwerkbau P34 pre charged (blue)

A totally new development it comprises the recoil damper used with great effect in the 603 and P70 match air rifles and has a frame specifically for the horizontal air cylinder which carries an end pressure gauge. The barrel shroud is ported to reduce flip and the muzzle-break to reduce recoil. It has lateral sliding barrel weights to achieve your preferred centre of gravity. The rearsight is their latest type giving exceptionally low line of sight, cut-out width adjustment and the normal height and elevation adjustments. With Morini adjustable anatomical wooden grip.

F650 (red)

### F690 Feinwerkbau 103 pneumatic pistol

This pistol was conceived from knowledge gained during the use of its predecessor, the 102. The priming arm can be completely detached or moved slightly on the pistol to give different weight and balance characteristics and provides very easy priming. Fitted factory standard with Morini wooden rake-adjustable grip with adjustable handshelf and a choice of front and rearsight blades.





#### **W1240 Walther GSP Expert**

Yet a further development of this time-honoured design. This latest model incorporates a new barrel mounting with plastic sleeve, the introduction of nitro-carbon coating to the breech for smoother operation over longer firing periods, sights positioned closer to the wrist to reduce errors and a new profile grip designed to be closer to the 'average' shooter factory new. Three grip size options are available for the right hand shooter but medium only for the left.

#### **W1335 Walther KSP200 .22l.r. standard pistol**

This is not a replacement for or a compliment to the GSP family but appeals to a totally new market. There is particular attention given to low recoil such that the follow-through of the shot is very positive and controlled. The centre of gravity has been brought rearward inside the hand (compared to the GSPs) to provide a totally new balance. The anatomical adjustable grip is manufactured from blue laminate birch and is available in small, medium and large sizes.



#### **W1212 Walther O.S.P.2000 .22 SHORT rapid-fire pistol**

This pistol is a direct complement to the GSP pistol above and represents the culmination of improvements incorporated within the design of this family over 25 years. A weight forward weapon with minimal barrel flip when fired to improve re-sighting, it has the benefit of an excellent adjustable Morini grip, a trigger unit second to none and a sight line that is as low to the barrel as is possible.

#### **H1050 Hammerli SP.20 .22l.r. standard pistol**

Developed from the now famous 280 this pistol encompasses the very latest high-tech materials to give the ultimate in weight and balance with high structural integrity and minimal weight. Can be supplied in a choice of attractive colours - blue, red, lilac, gold or traditional black. With a spare magazine. It is available with choice of five grip size options.



#### **H1014 Hammerli FP10 .22l.r. free pistol**

A new design to encompass a counter-balance system to suit every single shooter. Radially adjustable from the main frame with weights that can be precisely positioned this system is second to none. Easily operated and smooth load gate with high quality trigger for precise let-off. This is variable from 15-100 grms first pressure and 100-500 grms second pressure. Fully adjustable wrap-around grip and adjustable rearsight assembly.

#### **T800 TOZ.35 free pistol - .22l.r.**

This Russian origin free pistol is the best value for money in the market. It is also a tried and tested product over some 25 years and has changed little in that time, the design was so good in the first place! Adjustable Morini wrap-around anatomical grips guarantee stability. The mechanism is set while reloading and the trigger let-off is typical of this quality of pistol. It is supplied with all tools and spare parts to service the weapon for its lifetime's use.



**We are pleased to offer any product from Anschutz, Diana, Feinwerkbau, Hammerli, Steyr and Walther. More information upon request.**



### W1331 Walther 300 ALU pre-charged

Based on the new alloy stock this latest model offers 300 bar charging capability but is also supplied with adaptor for use at 200 bar. Single detachable black cylinder with end gauge. With multi-adjustable position handgrip (size options available), cheekpiece and alloy butt, movable fore-end support, adjustable rearsight and standard thread M18 foresight, the rifle is supplied standard with tools and handbook in a hard carry case.

### F628AB Feinwerkbau P70 ALU pre-charged

Available in red or blue anodised alloy versions - it is supplied with one detachable silver cylinder with end gauge and charging adaptor. The rising cheekpiece, alloy butt and handgrip are all multi-position adjustable - settings being very easily clamped - and the fore-end movable along the frame. An alloy rail is incorporated for use of a bi-pod rest. Sights are standard but the foresight is M22 (22mm).



### F626 Feinwerkbau 603 pneumatic side-lever

Incorporates their latest recoil damper to nullify reaction upon firing, has an easy-prime lever and is available with ALU or multicolour laminated stock - both of which are fully adjustable. Fully adjustable trigger, dry-fire mechanism, supplied with sights (22mm f'sight), charging adaptor, tools etc., ready for use.

### H1095 Hammerli AR50 ALU pre-charged

This new rifle from Hammerli brings changes from this famous factory that include use of a MEC alloy butt, incorporation of a triple weight counter-balance system under the cheek, mechanically adjustable cheekpiece and handgrip, a sliding fore-end support and alloy rail insert for bi-pod rest. Sights are Hammerli standard. Supplied with charging adaptor, tools and handbook.



### S729 Steyr LG100 pre-charged

A revolutionary concept with three parts: snap-in detachable fully adjustable butt and cheekpiece unit, ALU mainframe and a bayonet fitting barrel extension counterbalance unit that is locked to the barrel to carry sights etc.. The whole is carried in a fraction of normal rifle size. All weights can be finely set to suit your individual preference and all normal anatomical fittings securely locked once set. Very progressive!

### A1490 Anschütz 2002 ALU

200 bar single detachable silver cylinder with end gauge giving 300+ shots with DIN threaded charging adaptor. Available with left or right stock, sight set and either in large or small handgrip. Cant adjustable M18 foresight with elements. Multi-position alloy butt, cheekpiece and fore-end support are easily locked with the tools supplied.





### W1289 Walther KK200 Sport

Manufactured with the latest Walther barrel and aluminium stock for the I.S.S.F. 'Sporting Rifle' discipline. Fully adjustable stock in all senses. Available with electronic trigger - extra (W1289E). Latest factory rearsight and foresight. Ready to shoot with instructions and tools.



### W1294 Walther KK200.PM Power Match

Matt alloy, this attractive weapon is exceptionally functional. The floating barrel and every conceivable adjustment at butt and handgrip (available in 3 sizes) are designed to suit every shooter. Electronic or mechanical trigger options with all adjustments. Shorter rearsight allows use of all iris and filters. Supplied with tools and instructions in a quality rigid carry case. A 3-position front support is available at extra cost.

### A1460 Anschutz 2013/690

Has the original 690 mm barrel within a 4 bolt tie-down stainless receiver. Stock options are ALU, walnut, laminated, stepped cut-away fore-end, left and right! Adjustable handshelf to set trigger finger position. Latest 4765 multi-point alloy butt / hook unit and 4752 radially offset handstop combined button release swivel assembly. Rearsight is 20-click cant adjustable model with matching foresight. Supplied with allen key set, sight screwdriver and test group with instructions.



### A1410 Anschutz 2007 ALU

Designed to match their 2002 ALU air rifle the alloy stock is fully adjustable and easily locked to position once set. Supplied with 660mm barrel so that the overall weight complies with I.S.S.F. rules for their discipline. Right and left stock, grip and sight set options available. Has multi-point alloy butt, 20-click rearsight and cant adjustable foresight with a set of elements. Supplied with tools and owner's handbook.

### F614 Feinwerkbau 2602 ALU

This rifle is one of the greatest weapons to come to the market for a decade representing really excellent value for money. Truly well thought out, designed by a world-class shooter for shooters, machined and finished in red or blue anodised to a level not seen before at this price. Totally adjustable in all directions, well balanced, all-in-all a delight to use. The handgrip is rake adjustable. The fore-end support articulates on a pivot from the front for angle or can be dismantled for use with handstop and sling swivel only. Supplied with sights, tools, etc., ready to shoot.



### F616 Feinwerkbau 2602 Sport

A fully adjustable three position rifle with laminate stock and aluminium barrel sleeve to give aesthetic appeal as well as anatomical fit for all disciplines. Supplied with front palm support for standing and kneeling, factory sights, handstop and swivel - available right or left hand.

We are pleased to offer any product from Anschutz, Diana, Feinwerkbau, Hammerli, Steyr and Walther. More information upon request.

# special rifle equipment



## 840 Gehmann Contact II alloy butt plate

- \* a lightweight but totally universally adjustable alloy butt plate assembly
- \* can be retro-fitted to nearly all current production and some older match air rifles
- \* can be raised or lowered and contoured to the shoulder profile
- \* can be laterally adjusted on the central pivot block for right or left hand shooter
- \* adaptor for Anschütz 1907 stocks - **701** (extra)
- \* additional butt spacers available - **702** (extra)
- \* steel hook for free rifle - **703** (extra)



## 845 red alloy width-adjustable handstop

- \* unique split centre clamping design permits profiling to the individuals' preference
- \* attractively red anodised
- \* ball-fitting detachable sling swivel

## 845B blue alloy width-adjustable handstop

- \* as **845** but blue anodised



## 847 alloy high sight base set

- \* spring-loaded clamps for positive grip
- \* 6mm height increase
- \* attractively red anodised

## 847B alloy high sight base set

- \* as **847** but blue anodised



## 849 multi-directional high sight base set

- \* allows 6 - 15 mm vertical and 6 mm lateral adjustment
- \* easily locked into position
- \* finished in matt black
- \* precision engineered to fit Feinwerkbau rails

### 849A as above, but for Anschütz

### 849W as above, but for Walther



## 848 adjustable high sight base set

- \* precision engineered to fit Feinwerkbau rails
- \* infinite vertical shift from 6 to 15mm
- \* finished in matt black

### 848A as above, but for Anschütz

### 848W as above, but for Walther



### 708 bi-pod rifle rest

- \* designed to keep your rifle upright when not in use - of strong steel with plastic feet. Fits standard rails - clamping screw also suits old BSA's with threaded rail.



### 719 MEC trigger

- \* high precision alloy trigger blade designed to fit all popular weapons
- \* has rubber strips in the blade for grip
- \* adjusts in any axis
- \* simple to clamp in position once set
- \* designed to suit:

- \* **719A** - for Anschütz
- \* **719F** - for Feinwerkbau
- \* **719W** - for Walther



### 709 MEC butt hook unit

- \* fully adjustable butt/hook assembly
- \* combines **700-II** and **703** in one unit



### 700-II MEC 'Contact' II alloy butt pad

- \* manufactured from aluminium
- \* conforms to I.S.S.F. regulations
- \* ideal where your standard butt does not provide adequate fit or existing adjustments are inadequate
- \* a series of rubber pressure pads prevent slippage
- \* marked along the base for personal settings
- \* adaptor for Anschütz 1907 stocks - **701** (extra)
- \* additional butt spacers available - **702** (extra)



### 703 MEC hook only

- \* steel hook to fit the **700-II** MEC butt unit or the **840** Gehmann butt unit

### 704 MEC sight extension tube for match air rifles

- \* for Anschütz, Feinwerkbau, Walther and Steyr match air rifles only
- \* brushed alloy lightweight extension tube
- \* mounts over the muzzle of your rifle
- \* is supplied with two additional weights in steel that can be moved along the tube
- \* enables the foresight to be positioned over a longer sight radius if required
- \* supplied with height raising block for the rearsight to lift this to a compatible height with the foresight when the tube is fitted
- \* assists with noise reduction at the muzzle



### 843 Gehmann alloy butt plate

- \* inexpensive alloy butt plate assembly
- \* adjustable for height and radius on the base
- \* top and bottom prong can be positioned for length of fit over the shoulder depth
- \* suitable for fitting to all rifles
- \* for right or left hand shooter
- \* blue anodised



### 843R

- \* as **843**, red anodised

### 707 alloy handstop & swivel

- \* an alloy handstop with 40 mm swivel to suit all standard rifle fore-end rails





# protect your investment -



## *rifle cases*

### **952 plastic carry case**

- \* for one rifle with sights
- \* lockable with two catches
- \* black
- \* size: 48" x 10.2" x 3.7"  
122 x 26 x 9.5 cms

### **953 plastic carry case**

- \* for two rifles with sights
- \* lockable with two catches
- \* black
- \* size: 52" x 12.6" x 3.7"  
132 x 32 x 9.5 cms

### **956 aluminium carry case**

- \* for one rifle with sights
- \* rigid construction with inner laminate
- \* strong hinges & lockable clasps
- \* size: 47.6" x 9.8" x 3.7"  
121 x 25 x 9.5 cms

### **957 aluminium carry case**

- \* for two rifles with sights
- \* construction as for **956** above
- \* size: 48" x 15" x 3.7"  
122 x 38 x 9.5 cms

### **959 plastic carry case**

- \* for one rifle with sights
- \* budget priced
- \* black
- \* size: 47.6" x 9.1" x 3.9"  
121 x 23 x 10 cms

All cases are foam lined internally.  
All measurements are approximate and internal.

### **950 aluminium carry case**

- \* for two pistols
- \* excellent value for money
- \* robust hinges & locks
- \* size: 16" x 12.6" x 4.7"  
40.5 x 32 x 12 cms

### **954 aluminium carry case**

- \* for two pistols
- \* lockable
- \* size: 16.5" x 12.6" x 3.7"  
42 x 32 x 9.5 cms



## *pistol carry cases*

### **982 plastic carry case**

- \* for two pistols
- \* **982B** in blue
- \* **982R** in red
- \* size: 17.2" x 11.9" x 5"  
43.6 x 30.2 x 12.8 cms

# either hard or soft



## 739 nylon rifle slip

- \* high quality black rip-free nylon with multicolour angled bands
- \* 49.2" (125 cms) long with 2" (5 cms) thick internal foam padding



## 741 vistram rifle slip

- \* dark brown wear resistant vistram with full length two way zip
- \* 49.2" (125 cms) long with 2" (5 cms) thick internal foam padding

## 742/743 rifle slips

- \* exceptionally hard wearing quality soft case for the very best protection
- \* ability to be locked between zip tag and a stitched-on collar
- \* 51.2" (130 cms) long with 3.2" (8 cms) thick internal foam padding



## 743 red, blue and grey

## 742 brown



## 738 nylon rifle slip

- \* multicoloured with a full length two way zip
- \* 49.2" (125 cms) long with 2" (5 cms) thick internal foam padding

## 740 backpack match rifle slip

- \* another Gehmann first !!!
- \* high quality black rip free nylon backpack rifle slip with two external pouches
- \* 49.2" (125 cms) long with 2" (5 cms) thick internal foam padding
- \* full length zip

## 734 nylon rifle slip

- \* high quality dark blue rip-free nylon
- \* full length two way zip
- \* external pouch, long enough for spare air cylinders or accessories
- \* 51.2" (130 cms) long with 3.2" (8 cms) thick internal foam padding



## 450 shooters carry-all bag

- \* constructed in lightweight nylon
- \* see page 35 for details



All our gunslips are fitted with a shoulder strap.

# is it good news or is it bad news?

*whichever one - you have to see the results clearly*



## 241 Gehmann 22 x 60 spotting 'scope

- \* 22 x angled eyepiece ( these can be changed to 30x, 40x or 50x magnification at additional cost - if required ) capable of viewing a .22 bullet hole at 100 metres
- \* best quality optical lenses with a bright picture
- \* can be used from 10 metres to infinity
- \* crackle-grey waterproof finish
- \* protective metal lens caps for the object lens and eyepiece as standard

## 241- 30x, 40x & 50x spare eyepieces

- \* interchangeable lenses for higher magnification 30x **241-30**, 40x **241-40**, 50x **241-50**

## 242 clamp ring

- \* factory matched for the **241** 'scope
- \* felt lined and finished in crackle-black
- \* ready-threaded for use on camera tripods
- \* will fit directly to our stand **274**



220



221



225

## 255-261 Kowa TS 501 & TS 502

- \* **255 & 256** have angled eyepieces, **260 & 261** is straight
- \* new lightweight alloy construction
- \* grey or lilac finishes available
- \* either 20x or 20 - 40x magnification



265



255



261

## 223 Optolyth TSB 80GA body only

- \* angled eyepiece body - for use with:
- \* 30x magnification (**223/30**)
- \* 40x magnification (**223/40**)
- \* 20 - 60x magnification (**223/20-60**)
- \* 30 year guarantee



223



226

	model	magnification	objective Ø	field at 1000 m	length	weight	angled eyepiece	suitable for
220	Gehmann - Special	20 - 60 x	60 mm	26.2 - 15.2 m	350 mm	1100 grms	Y	10 - 100 m
221	Gehmann - Standard	12 - 36 x	50 mm	53.0 - 30.0 m	350 mm	760 grms	Y	10 - 50 m
222	Gehmann - Basic	18 - 36 x	50 mm	31.0 - 36.0 m	350 mm	980 grms	Y	10 - 50 m
241	Gehmann	22, 30, 40 & 50 x	60 mm	39.7 m	400 mm	800 grms	Y	10 - 300 m
223	Optolyth TBS 80GA	30, 45, 20 - 60 x	60 mm	55.0 - 20.0 m	380 mm	1390 grms	Y	10 - 300 m
225	Far East model	14 - 45 x	50 mm	47.4 - 15.5 m	280 mm	735 grms	N	10 - 100 m
265	Field scope	20 x	50 mm	44 m	220 mm	390 grms	Y	10 - 100 m
255/256	Kowa TS 501	20, 20 - 40 x	50 mm	39.0 - 26.0 m	215 mm	380 grms	Y	10 - 100 m
260/261	Kowa TS 502	20, 20 - 40 x	50 mm	39.0 - 26.0 m	237 mm	380 grms	N	10 - 100 m
226	Kowa TS 611	25, 40, 20 - 60 x	60 mm	31.0 - 17.0 m	299 mm	780 grms	Y	10 - 100 m
266	Kowa TSN 821	50, 20 - 60 x	82 mm	33.0 - 17.5 m	384 mm	1400 grms	Y	10 - 300 m
267	Kowa TSN 822	50, 20 - 60 x	82 mm	33.0 - 17.5 m	382 mm	1380 grms	N	10 - 300 m
268	Kowa TSN 823 „Prominar“	50, 20 - 60 x	82 mm	33.0 - 17.5 m	384 mm	1400 grms	Y	10 - 300 m



# getting good support



## 272 tripod scope stand

- \* a full height adjustable tripod based stand with vertical extension rod
- \* also uses **276** universal head
- \* universal swivel arm for all settings
- \* suitable for three position shooting
- \* folded 22.4" (57 cms), weight 2200 grms

## 274 alloy scope stand

- \* lightweight brushed aluminium
- \* height adjustable vertical rod (can be extended with our 61 cms rods)
- \* utilises the **276** ball & socket head
- \* has close-up bi-pod legs for storage
- \* can be adapted for all telescopes
- \* suitable for our 22 x 60 scope **241**
- \* weight 1380 grms

## 278 61 cms vertical extension rod

- \* for **274**

## 279 Gehmann broad-leg tripod

- \* exceptionally wide leg spread
- \* supported by internal bracing legs
- \* handle adjustable scope bracket
- \* extendable central column & legs
- \* central column threaded both ends for mounting scope above (3-position) or below (prone)
- \* maximum extended length 160 cms
- \* collapsed 58 cms, weight 1380 grms

## 276 ball & socket joint

- \* universal joint to give perfect sight in the vertical or horizontal plane
- \* comes ready threaded in 1/4" but is also supplied with a spare 3/8" unit

## 277 Cullman special tripod

- \* new design, is stable in all positions
- \* exceptionally strong and solid base tripod unit coupled to a robust centre column clamp
- \* additional bracing legs for stability
- \* vertical rod is extendable to 180 cms
- \* utilises a ball & socket head for the telescope mounting plate (another is available - **277K** - for prone shooting which has a quick-release plate)
- \* length folded 31 cms, weight 1690 grms



## 290 Gehmann scope stand

- \* a full height adjustable scope stand
- \* special strong and solid design
- \* maximum extended length 153 cms
- \* collapsed length 30.5 cms
- \* supplied with ball & socket joint **276**
- \* weight 3000 grms

## 270 & 271 universal scope stand

- \* suitable for mounting at the range or out in the field with the integral clamp
- \* utilises our **276** universal ball & socket adjustable head
- \* comprises clamp unit and a rod that extends from 50 - 100 cms
- \* **271** uses a solid fixed rod instead of the extendable one on **270**
- \* **271** gives only 50 cms fixed length



# ballistic & proof test equipment



## 820 Gehmann machine rest

- \* for precise testing of rifles up to and including calibre .243 Win.
- \* rifles are clamped in their stocks at the butt and fore-end, the clamps being fully adjustable to accommodate all stock shapes
- \* the upper carriage has soft rubber universal clamps suitable for all shapes and is constructed to eliminate any undue pressure points
- \* fore and aft travel is on bushed rods with two spiral springs at the rear to absorb the recoil and two transverse springs at the front to absorb lateral travel during firing and to give centralisation before and after testing



## 821 adaptor clamp for pistol & revolver

- \* designed to be used on 820 above

## 822 support table

- \* designed for use with 820 above



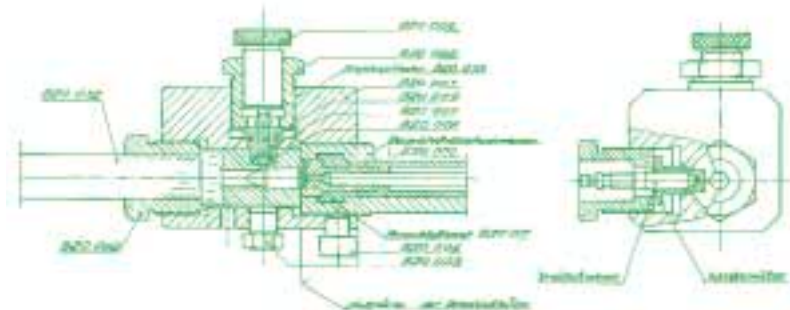
## 830 machine rest for testing handguns up to .22 l.r.

- \* excellent quality at a very affordable price
- \* universal clamp that is suitable for air or live-round pistols
- \* longitudinal carriage for precise shooting alignment
- \* adjustable levels of recoil absorption to suit all types of handgun
- \* identical repositioning - shot after shot



## Gehmann weapons proof testing gauge

- \* gas pressure operated test gauge for ammunition service pressures and ballistic accuracy
- \* a unique advantage to our machine is the ability to use both types of test: copper rods or quartz crystals (Piezo test) - even at the same time if desired
- \* supplied in four versions:
  - 1: rimfire pistol and revolver cartridges, bolt action
  - 2: rifle cartridges up to 15 mm base diameter, bolt action
  - 3: cartridges up to 37 mm base diameter, bolt action or falling block
  - 4: cartridges up to 50 mm diameter, falling block



### **132-136 magnified plug scoring gauges**

- \* these gauges conform to I.S.S.F. rules with regard to diameter of the plug. Magnification helps the scorer with his judgement, sprung handles avoid the possibility of tearing shot holes. Available in .177 132 & sizes: .22, .32, .38 & .45 all as 133-...
- \* special outward scoring gauges also available for air rifle & pistol
- \* 134, 135, 136 description as 132 & 133 but without the magnifier

### **139 wood boxed set of all the above gauges (132-136)**

### **140 wood boxed set of unmagnified gauges only**



### **142 illuminated scoring gauge**

- \* battery operated illumination (battery supplied)
- \* 10 x magnified screen with multi-calibre scoring rings

### **730 as 142 - but without a scoring screen**



### **158 DISAG 'RM III / Universal' - with target disc printing**

- \* automatic scoring gauge for air weapons, gallery rifle, small-bore rifle & pistol, running target rifle (from 10 - 100 metres) together with any full-bore weapon to a maximum target size of 26 x 26 cms
- \* a high quality item that is easy to handle
- \* compatible with computers and other DISAG equipment
- \* capable of analysing score and time performance for two-shot or rapid-fire using variable timed turning targets

### **160 Additron 5000 scorer's calculator**

- \* enables the scorer to enter individual or team competitor numbers
- \* permits scores to be entered against the competitor(s) number(s)
- \* enables the scorer to accumulate score detail to a total point
- \* will then provide full score summary
- \* can be coupled to a computer or printer - not included in the price...



### **169 RIKA 'Easy-Score' 220 portable electronic scoring device**

- \* a complete stand-alone 230V scoring system
- \* individual competitor or team details are entered and stored for later use on a results sheet or for diagnostic analysis
- \* shot targets of any colour are fed to the front of the machine without need of any centralising and scanned for score
- \* accommodates all target sizes from single slim vertical strips to 8.7" (22 cms) width!
- \* the shot card exits the rear and the score is simultaneously displayed on the L.C.D. screen
- \* comes in a quality rigid carry case
- \* can be coupled to a computer or printer - not included in the price...



### **179 SAM 4000 - with target disc printing**

- \* automatic scoring system for all popular air rifles & pistols and small-bore targets up to 18 cms
- \* a quality product that is easily transported from range to range
- \* results shown on a high quality display
- \* compatible with analysing computers
- \* possibility of reading bar codes if they are used on targets or, alternatively, competitor number stickers



# can you carry the weight

## knowledge & understanding

### Gehmann trigger weight testers

- \* high quality trigger weights manufactured in a stainless finish for precise measuring at home, club or during competition
- \* conforms to I.S.S.F. regulations whether used with or without the rubber sleeve around the top of the suspension arm - when removed a knife-edge formed in the top of the bar enables accurate location of the weight on the trigger blade
- \* accuracy of every weight is guaranteed to I.S.S.F. requirements



### Gehmann trigger weight testers

#### 750-1500

- \* for all weapons, long rod fitted with 1 x 500 grms plus 1 x each 140, 360 and 500 grm weights

#### 750-1360K

- \* for pistols, short rod fitted with one 500 grms weight plus 1 x 360 grms & 1 x 500 grms

#### 750-500

- \* for moving target rifle, long rod fitted with a 500 grms weight

#### 750-500K

- \* for air pistol, short rod fitted with a 500 grms weight
- \* individual weights available (751-140, 751-360 & 751-500)

#### 751

- \* individual weights available as listed above under 750-500K

### Gehmann trigger pressure gauges

- \* hand held clock gauges with pressure feeler indicator which abuts a drag indicator to show the final setting
- \* drag indicator can be reset every time

#### 890

- \* for the pressure range 25 - 250 grms

#### 892

- \* for the pressure range 200 - 2000 grms

#### 891

- \* for the pressure range 50 - 500 grms

#### 894

- \* for the pressure range 5 - 50 grms



### 735 boxed 1500 grms weight set

- \* comprises four matt black weights
- \* short rod fitted 500 grms weight plus 1 x each 140, 360 & 500 grm weights
- \* spring system to eliminate false readings
- \* wooden boxed for protection & storage



### velocity gauges

- \* models BMC12 and BMC17 are now regarded as the latest due to their ability to be coupled to light sensors LS100 and LS270
- \* ideal for shoulder or side arms these very compact gauges can be linked to the BMC12 computer
- \* the light barriers are held in a rigid frame

#### 175 BMC17 electronic scorer

- \* a compact unit for all calibres to .44
- \* light beam sensor able to read the bullet passage across 250 - 500 metres
- \* clear & precise digital read out display
- \* supplied with a rigid frame

#### 174 BMC12

- \* for all ballistic measurements up to machine gun
- \* provides full trajectory and deflection data as required by manufacturers





### 755 clothing thickness gauge

- \* manufactured in itself to I.S.S.F. regulations
- \* for measuring thickness of materials in order that no extra support is used to gain an advantage over fellow competitors
- \* the machine is easily handled by any referee
- \* three coloured scales are used on the gauge which measures from 0 - 20 mm by 0.5 mm increments
- \* pressure is applied via two 30 mm pads exerting 50 + 6 Nm



### 757 I.S.S.F. clothing rigidity gauge

- \* manufactured to suit the latest I.S.S.F. rules
- \* the tool applies pressure to an area without seams via a 10 cms plexiglass disc to a datum within 3/10 of a millimetre
- \* an electronic sensor situated under the material will emit an audible sound for a fail - the result appears on a L.C.D. display
- \* automatic reset to zero occurs after every reading
- \* the gauge switches off after one minute without use in order to conserve power
- \* supplied with table which provides protection in transport and support for gauge and item tested



### 736 I.S.S.F. prone shooting front arm angle gauge

- \* a simple plastic device for the prone discipline only
- \* measures the angle of the front arm in relationship to the ground to check it is not too shallow - as required under the I.S.S.F. rules

### 737 I.S.S.F. jacket button position gauge

- \* a simple plastic device for measuring the distance from the button position to the edge of the jacket - as required under the latest I.S.S.F. rules



### 758 I.S.S.F. sizing box for live round pistols

- \* for testing live round pistols for compliance with I.S.S.F. rules on size
- \* manufactured in metal with a clear perspex lid



### 168 Combro cb-625

- \* compact chronograph and kinetic energy meter specifically designed for airguns
- \* excellent value for money

### 759 as above - for air pistols

# customising & tuning equipment



## W1330 Walther aluminium stock

- \* design as above. Specifically for the Anschütz 1907 & 1913
- \* provides numerous mechanical adjustments simply not available with traditional wooden stocks
- \* can be supplied with a choice of one of three grip sizes



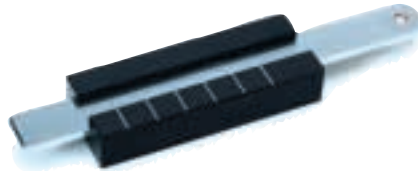
## 273 3-position rifle rest

- \* used to rest the rifle when shooting in the standing or kneeling positions
- \* provision for the cartridge box at a convenient height
- \* has a strong tripod base with height adjustment over range 60 - 160 cms
- \* length folded 55 cms
- \* weight 1780 grms



## 705 torque wrench

- \* supplied with 4 torque bits: SW.2.5, SW.3, SW.4 & SW.5 mm
- \* permits adjustment from 4 - 12 Nm
- \* oxidation free and suitable for a lifetime's use



## 138 rim thickness gauge

- \* for measuring .22 bullet rim thicknesses
- \* rounds are dropped into a hole and the slide moved across until it stops
- \* note is made of this round's measured mark on the slide and it is stacked under that batch number
- \* once sized - all rounds with identical rim thickness will also have identical head space in the breach and behave identically from the muzzle
- \* **the** most important piece of equipment for top shooters believing everything else is cared for!



## 866 Gehmann special tool

- \* special multi-tool screwdriver set
- \* comprises a snap-in magnetic bit holder that locates in the handle when closed
- \* is supplied with 7 bits - 2 x screwdriver, 2 x Philips pattern, 3 x pozi-drive (SW.2.5, SW.3 & SW.4 mm)



## 712, 713 & 714 stop watches





### 748 'Sight Black'

- \* stops glare
- \* fast drying
- \* easy to use
- \* net. weight 3.5 oz (100 grms)

### 749 sight cleaning aerosol

- \* aerosol of dry air for pressure cleaning of sights



### 746 & 747 foresight covers

### 5003 & 5004 rearsight iris & foresight push-on dust caps

- \* simple plastic dust caps to keep dust and dirt out of your expensive sighting equipment
- \* specify rear or foresight !
- \* **5003** rearsight & M22 foresights
- \* **5004** for M18 foresights



### 715 handwarmer for charcoal sticks

### 716 charcoal sticks (qty. 12)

- \* charcoal fuel-sticks for 715

### 726 electronic ear defenders

- \* electronically amplified stereophonic sound which allows normal hearing with superb comfort
- \* allows continuous wear with full blast protection
- \* each ear has individual sound control plus on/off switching
- \* fully adjustable - olive green - weight 390 grms
- \* available with a re-charging kit **726L**

### 727 Arton 1000 ear defenders

- \* extremely comfortable with padded headband
- \* collapsible for easy storage - beige - weight 240 grms



### ear protection

### 733 ear defenders - suitable for full-bore

- \* ultra thick padding for high noise protection, collapsible - blue - weight 250 grms

### 720 EAR plugs

- \* easy to use disposable foam ear plugs - in packages of 10 pairs

### 722 Silencio elasticated plugs

- \* a pair of plugs that can be moulded to the profile of the ear
- \* **725** plugs with internal metallic membrane

### 724 Peltor defenders

- \* thicker insulation to provide higher levels of protection
- \* infinite height adjustment for personal comfort
- \* collapsible for storage
- \* weight 180 grms
- \* black

### 731 ear defenders - suitable for small-bore

- \* thick padding for protection - red - weight 190 grms

### 717 Super-Gyro wrist exerciser

- \* a dynamic wrist ball which requires constant rhythmic gyrations to perpetuate spinning - thus generating muscle growth to the shooter's wrist and forearm. Lightweight and portable - can be used anywhere and at any time !



### 718 Therabee, Dynamo

- \* similar to 717 but slightly heavier and requiring more energy input
- \* useful as a second step in muscle building once development with 717 is achieved

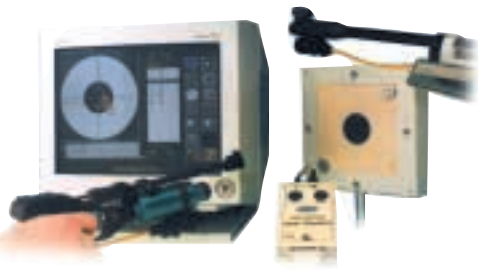
### 162 RIKA training aid

- \* suitable for ALL rifles & pistols
- \* uses safe infra-red light - no lasers - with or without ammunition. Can be used without ammunition to 10 metres
- \* with sender, receiver, target holder, cables & charger
- \* sophisticated post-shoot analysis to your own PC giving timing, cant angle - options for heart rate and trigger sensing
- \* extremely lightweight and easy to use for all shooters



### 163 SAM training aid

- \* for rifles and pistols - uses Windows 3.1x or 95
- \* multi-weapon attachment for distances up to 10 metre
- \* no need for special targets - uses standard 10 metre cards
- \* directly connected to your own PC and gives analysis of your technique and score for further printing if required
- optional trigger sensor available



### 760-777 V.F.G cleaning equipment

- \* we offer the full range of V.F.G cleaning felts for both rodding through and shooting through
- \* adaptors to suit their own rods and those of other manufacturers available for all calibres of weapons - please enquire



### 785 & 786 Gehmann match pellets

- \* house brand 'Finale Match' wadcutter pellets by H & N in tins of 500

### 798 Gehmann match pellet flipper

- \* a .177 wadcutter match pellet-flipper
- \* tray is filled direct from a tin of 500 pellets
- \* lower tray is depressed, latched and the tray then shaken with the loose pellets on top
- \* the loose pellets drop nose down into 100 holes laid out in ten rows of ten
- \* surplus pellets are shaken back into their tin via a cut-out in one corner
- \* the lower tray latch is released and all the pellets pop up in lines ready for use
- \* foam inside lid protects pellets when closed
- \* so easy to use and so cheap to buy!



### 710 wooden cartridge box

- \* manufactured in the finest beech hardwood
- \* deliberately designed to be used for life
- \* machined for precise closing and exact location of 8 individual trays of 10 rounds
- \* enables the tray in use to be held at the front to expose only 10 rounds (to I.S.S.F.)
- \* supplied with a set of shot marker pins and a paper target bull in the lid

the full range from H & N is available



#### 284 4-fold plasticoated waterproof shooting mat

- \* Exceptionally heavy duty and very durable weatherproof shooting mat. Has plasticoating over all surfaces for total weatherproofing. Manufactured with a large area of non-slip pimpled rubber for adhesion with the elbows while shooting. Thick foam padding offers complete comfort even on the most difficult terrain. Supplied with rugged carry handles to support rifle etc...



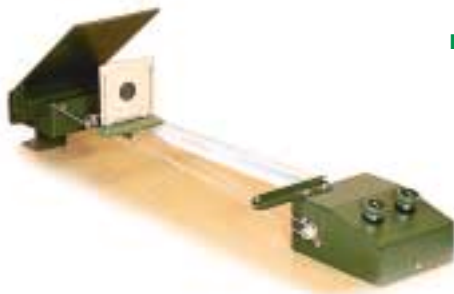
#### 187, 188 & 189 target holders

- \* for either air rifle or air pistol these traps are made in 1 mm thick metal and contain a 3 mm pellet backstop

187 for air rifle targets: 10 x 10 cms

188 for air pistol targets: 17 x 17 cms

189 air rifle & air pistol targets: 14 x 14 cms



#### 182 electronic target changer set

- \* interchangeable target holder for air rifle and air pistol only
- \* the 230 volt motor can be instantly switched from forward to reverse and is fitted with a sensor to reduce from fast to slow drive with minimal target travel prior to turn-around
- \* especially silenced pellet trap to assist competitors
- \* wired for installation without lighting
- \* a modification set is available for crossbow

#### 180 manual air rifle target changer set

- \* comprises a drive wheel to be operated by the shooter with a V-belt to the transporter drive. Includes the pellet trap together with the target holder with running cords. Suitable for all the standard international rifle targets. For installation against a suitable backstop area.

#### 180LP manual air pistol target changer set

- \* as 180 but utilising a larger pellet trap - can also be used for rifle

#### 105 50 metre target carrier

- \* supplied standard for use with 380 volts two-stage motor for fast & slow traverse of the target carrier
- \* galvanised & plasticoated wires ensure weather-free operation and protection against oxidation
- \* runs on ball bearing mounted wheels for an exceptionally smooth traverse
- \* press button control
- \* supplied with a 34 x 34 cms target frame
- \* may be installed suspended if preferred

#### 190 electronic air rifle target changer

- \* easily installed, works without strings and automatically changes the target when the shooters press their button
- \* each of the 70 targets held in the top hopper drops into the base collector after firing
- \* the following target appears automatically

#### 195 electronic air rifle & pistol changer

- \* designed to be suitable for both rifle and pistol but does require the attachment of a guide frame when used for rifle

#### 196 vertical support for 190 or 195 for 3-Position



#### target repair stickers

- \* supplied in a packet of 1000 easy-peel stickers

114S 15 mm black

114W 15 mm white

116S 19 mm black

116W 19 mm white

#### 113 continuous 50 metre small-bore rifle target band

- \* 250 serial numbered targets in one band

#### 115 target repair stickers for above

- \* 250 x 50 metre bullseyes to suit the above

#### 124 50 metre free pistol target band

- \* 100 serial numbered targets in one band

#### 125 target repair stickers for above

- \* 100 serial numbered targets in one band



Please ask for our range of targets





# Gehmann target changers

## **120-100 50 metre free pistol and 100 metre rifle changer**

- \* requires 230 volts mains (110 volts available without surcharge)
- \* a self-contained unit with 55 metres of cable (of course you need more for the 100 range)
- \* comes complete with one shooter's control switch for forward and reverse target movement
- \* new design with single stainless steel electric drive system situated above the target
- \* this new electric drive is very simply removed for overhaul or maintenance without any tools and is E.C. electric standards compliant - it cannot be retrofitted to earlier models
- \* the new drive systems allows use of the very first target - ensuring no losses
- \* the external casing has improved powder-coating finish for longer weatherproofing life
- \* the angled deflector and back-stop plate is 3 mm thick and of higher specification material
- \* a simple pull-handle allows all shot rounds to drop from the collector into your disposer
- \* size: 124 x 66.5 x 42 cms - weight 76 kg - bullseye height 72 cms from the ground



This unit can also be used for 50 metre rifle when fitted with 126-50 guide plate

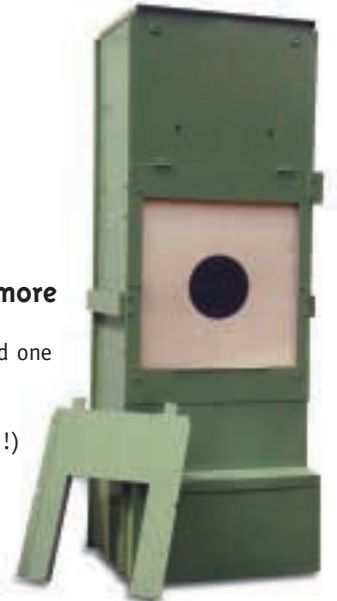
This unit is also available for larger calibres without the bullet deflector plate 130-100



## **110-50 as above - but for 50 metre rifle**

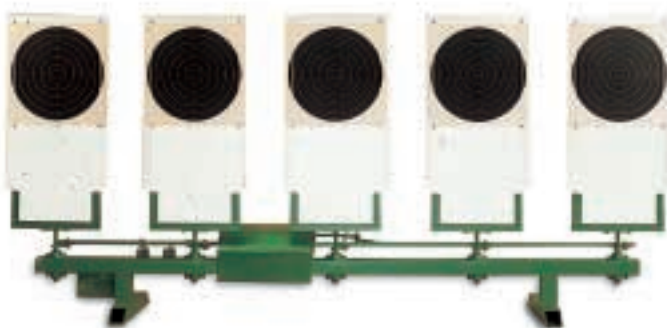
- \* technical qualities as 120-100 above
- \* size: 99 x 49.5 x 38 cms - weight 49 kg - bullseye height 58.5 cms from the ground

This unit can also be supplied without bullet plate deflector for use with larger calibres 112-50



## **131 individual target changer for 50 metres or more**

- \* for 230V mains electricity (110V available)
- \* one self-contained unit with 55 metre drum of cable and one shooter's control switch to feed the next target
- \* for 50 metre rifle or 50 metre free pistol (extension cable available for use at 100 metres - extra !)
- \* will feed up to 100 targets from the top hopper
- \* shot cards drop to the bottom collector
- \* spent bullets lodge in the rear trap
- \* size: 148 x 60 x 57 cms - weight 80 kg - bullseye height 90 cms from the ground



## **101 10 metre air pistol turning target changers**

- \* consists of 5 turning targets driven by a geared 230 volt motor
- \* has a time controller for 3 - 7 second turns or rapid-fire control over 4, 6, 8 or 10 seconds
- \* easily mounted from the rear against a wall and sold without a pellet trap

## **100 25 metre turning target changers**

- \* consists of five turning targets coupled to a 3-phase A.C. motor.
- \* the T.P.E. timing mechanism accommodates all known I.S.S.F. disciplines
- \* mechanical linkages manufactured to be smooth and accurate to within 0.2 seconds
- \* made of aluminium the changer is absolutely weather-proof and exceptionally durable
- \* individual timing is shown on the control mechanism supplied with 8 metres of cable
- \* supplied assembled and wired together with foundation plans if required

## knowledge & understanding

**Gehmann target changers** are the most diverse in the market - used at all levels of shooting from private to club, international and Olympic competition.

They are designed to be trouble free in all theatres of operation with any form of climate. They are easily transported for situations where storage away from the normal installation is desirable and simply connected-up ready for service with a minimum of help. Constructed of steel but weather-proofed, they operate with minimum of moving parts to negate any possibility of malfunction in the course of competition - reliability being the company's watchword.

Operating from a choice of 12 volts with batteries or 230 volts mains-transformed in banks of up to six at a time (no surcharge for 110 volts) they may be individually controlled at the firing point by the shooter.

Target numbering has I.S.S.F. approval - so with video coverage at the butts both scoring and the tension involved can be appreciated by spectators. Shooters can benefit from this during practice.

Installations can be supplied with drums of cable (including connectors), or, if a more permanent installation is required hard-wiring to the customer's specification. Suitable foundation plans are available if required.

Most importantly - these are considered environmentally friendly as they trap the spent rounds for later disposal.

### 110N 50 metre small-bore rifle target changer

- \* for 230V mains (110V available)
- \* one self-contained target changer complete with one 55 metre drum of cable and one shooter's control switch for forward or reverse motoring of the target band (these are extra)
- \* size: 100 x 50 x 37 cms - weight 42 kg - bullseye height 60 cms from ground

### 110 as above - battery powered

### 120N 100 metre small-bore rifle & 50 metre free pistol target changer

- \* for 230V mains (110V available)
- \* a self contained target changer complete with one 110 metre drum of cable and one shooter's control switch for forward and reverse motoring of the target band  
**if also used for 50 metre small-bore rifle a guide plate 126 is needed - extra !**
- \* size: 124 x 63 x 41 cms - weight 66 kg - bullseye height 70 cms from ground

### 120 as 120N - but battery powered

### 130 for larger calibers

- \* supplied without bullet trap
- \* as 120 but without either cable or switch

### 170 range video system

- \* operates on 230 volt mains supply
- \* comprising rain-shielded video camera, pivot mount, 55 metres of cable and one video screen
- \* can be used for training with one or two individuals or as a means of monitoring small groups
- \* ideal for self-scoring while using **Gehmann 110** and **120** target changers without need to scope the shot
- \* ideal for the club where non-participant spectators get a chance to see scores developing
- \* can be used as an aid to inspire spectators to participate
- \* easily expanded with additional cameras (extra)







## **Gehmann GmbH & Co KG**

40 Karlstrasse  
76133 Karlsruhe, Germany  
or

P.O. Box 110548  
76055 Karlsruhe, Germany

Tel: +49 7 21 2 45 45

+49 7 21 2 45 46

Fax: +49 7 21 2 98 88

e-mail: [gehmann-ka@t-online.de](mailto:gehmann-ka@t-online.de)

website: [www.gehmann.com](http://www.gehmann.com)

CONTACT YOUR DEALER BELOW:

ALL OUR GOODS ARE SUPPLIED THROUGH AUTHORISED AGENTS ONLY